

## Product datasheet for **TA384900S**

### **C1orf57 (NTPCR) Rabbit Monoclonal Antibody [Clone ID: R06-6I7]**

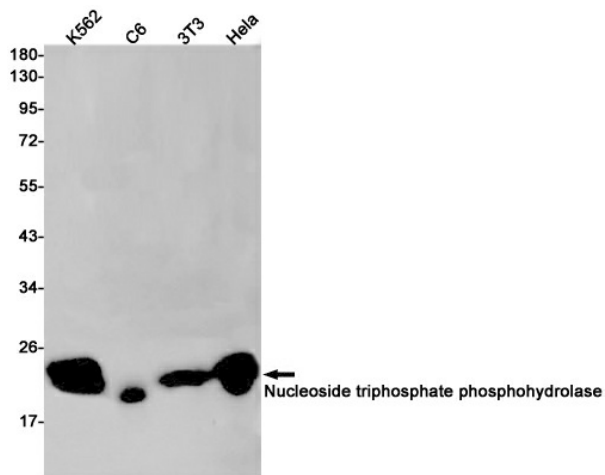
#### **Product data:**

|                         |  |
|-------------------------|--|
| Product Type:           | Primary Antibodies   |
| Clone Name:             | R06-6I7  |
| Applications:           | IP, WB   |
| Recommended Dilution:   | WB: 1/1000<br>IP: 1/20   |
| Reactivity:             | Human, Mouse, Rat  |
| Host:                   | Rabbit   |
| Isotype:                | IgG  |
| Clonality:              | Monoclonal   |
| Immunogen:              | Recombinant protein of human Nucleoside triphosphate phosphohydrolase                    |
| Formulation:            | 50mM Tris-Glycine(pH 7.4), 0.15M NaCl, 40% Glycerol, 0.01% Sodium azide and 0.05% BSA    |
| Concentration:          | lot specific   |
| Purification:           | Affinity Purified  |
| Conjugation:            | Unconjugated   |
| Storage:                | Store at 4°C short term. Aliquot and store at -20°C long term. Avoid freeze/thaw cycles. |
| Stability:              | 1 year   |
| Predicted Protein Size: | Calculated MW: 21 kDa; Observed MW: 21 kDa   |
| Gene Name:              | nucleoside-triphosphatase, cancer-related  |
| Database Link:          | <a href="#">Entrez Gene 84284 Human Q9BSD7</a>   |
| Background:             | Swiss-Prot Acc.Q9BSD7.Cancer-related nucleoside-triphosphatase                           |
| Synonyms:               | C1orf57; HCR-NTPase; RP4-659I19.2; RP4-678E16.2  |



[View online »](#)

## Product images:



Western blot analysis of Nucleoside triphosphate Phospho-hydrolase in K562, C6, 3T3, HeLa lysates using NTPCR antibody.