

Product datasheet for **TA384894S**

NRF1 Rabbit Polyclonal Antibody

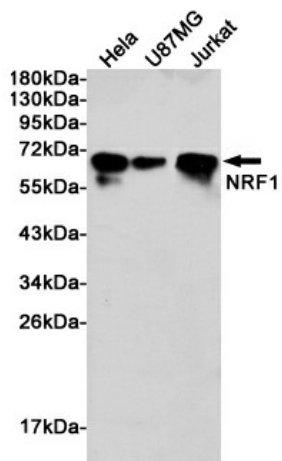
Product data:

Product Type:	Primary Antibodies
Applications:	FC, IF, IHC, IP, WB
Recommended Dilution:	WB: 1/500-1/2000 IHC: 1/50-1/200 ICC/IF: 1/50-1/200 IP: 1/50 FC: 1/50
Reactivity:	Human, Mouse, Rat
Host:	Rabbit
Isotype:	IgG
Clonality:	Polyclonal
Immunogen:	A synthesized peptide derived from human NRF1
Formulation:	Rabbit IgG in phosphate buffered saline , pH 7.4, 150mM NaCl, 0.02% sodium azide and 50% glycerol.
Concentration:	lot specific
Purification:	Affinity Chromatography
Conjugation:	Unconjugated
Storage:	Store at 4°C short term. Aliquot and store at -20°C long term. Avoid freeze/thaw cycles.
Stability:	1 year
Predicted Protein Size:	68kDa
Gene Name:	nuclear respiratory factor 1
Database Link:	Entrez Gene 4899 Human Q16656
Background:	Swiss-Prot Acc.Q16656. Transcription factor that activates the expression of the EIF2S1 (EIF2-alpha) gene. Links the transcriptional modulation of key metabolic genes to cellular growth and development. Implicated in the control of nuclear genes required for respiration, heme biosynthesis, and mitochondrial DNA transcription and replication.
Synonyms:	ALPHA-PAL; EWG; NRF-1; OTTHUMP00000184912

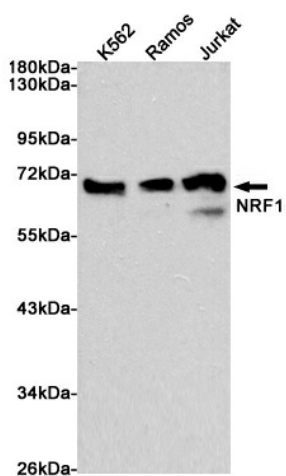


[View online »](#)

Product images:



Western blot analysis of Nrf1 in HeLa, U87-MG and Jurkat lysates using Nrf1 antibody.



Western blot analysis of Nrf1 in K562, Ramos and Jurkat lysates using NRF1 antibody.