

## Product datasheet for **TA384894**

### **NRF1 Rabbit Polyclonal Antibody**

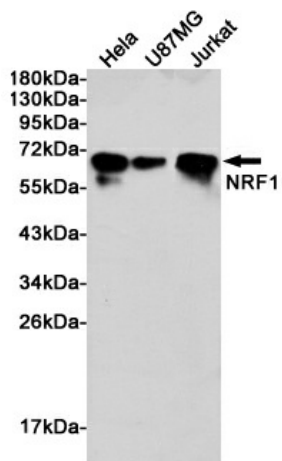
#### **Product data:**

<b>Product Type:</b>	Primary Antibodies
<b>Applications:</b>	FC, IF, IHC, IP, WB
<b>Recommended Dilution:</b>	WB: 1/500-1/2000 IHC: 1/50-1/200 ICC/IF: 1/50-1/200 IP: 1/50 FC: 1/50
<b>Reactivity:</b>	Human, Mouse, Rat
<b>Host:</b>	Rabbit
<b>Isotype:</b>	IgG
<b>Clonality:</b>	Polyclonal
<b>Immunogen:</b>	A synthesized peptide derived from human NRF1
<b>Formulation:</b>	Rabbit IgG in phosphate buffered saline , pH 7.4, 150mM NaCl, 0.02% sodium azide and 50% glycerol.
<b>Concentration:</b>	lot specific
<b>Purification:</b>	Affinity Chromatography
<b>Conjugation:</b>	Unconjugated
<b>Storage:</b>	Store at 4°C short term. Aliquot and store at -20°C long term. Avoid freeze/thaw cycles.
<b>Stability:</b>	1 year
<b>Predicted Protein Size:</b>	68kDa
<b>Gene Name:</b>	nuclear respiratory factor 1
<b>Database Link:</b>	<a href="#">Entrez Gene 4899 Human Q16656</a>
<b>Background:</b>	Swiss-Prot Acc.Q16656. Transcription factor that activates the expression of the EIF2S1 (EIF2-alpha) gene. Links the transcriptional modulation of key metabolic genes to cellular growth and development. Implicated in the control of nuclear genes required for respiration, heme biosynthesis, and mitochondrial DNA transcription and replication.
<b>Synonyms:</b>	ALPHA-PAL; EWG; NRF-1; OTTHUMP00000184912

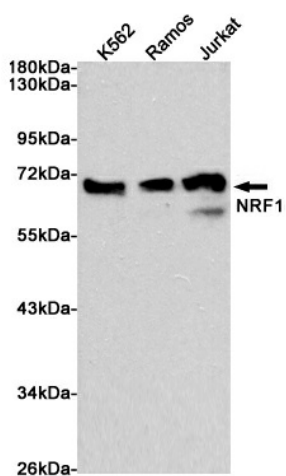


[View online »](#)

## Product images:



Western blot analysis of Nrf1 in HeLa, U87-MG and Jurkat lysates using Nrf1 antibody.



Western blot analysis of Nrf1 in K562, Ramos and Jurkat lysates using NRF1 antibody.