

## Product datasheet for **TA384890**

### Glucocorticoid Receptor (NR3C1) Rabbit Polyclonal Antibody

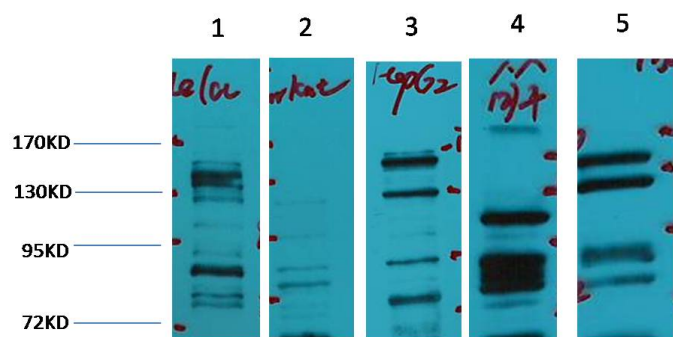
#### Product data:

Product Type:	Primary Antibodies
Applications:	WB
Recommended Dilution:	WB: 1/1000-3000
Reactivity:	Human, Mouse, Rat
Host:	Rabbit
Isotype:	IgG
Clonality:	Polyclonal
Immunogen:	Recombinant Protein of Glucocorticoid receptor
Formulation:	Liquid in PBS containing 50% glycerol, 0.5% BSA and 0.02% sodium azide, pH 7.3.
Concentration:	lot specific
Purification:	Affinity Purified
Conjugation:	Unconjugated
Storage:	Store at 4°C short term. Aliquot and store at -20°C long term. Avoid freeze/thaw cycles.
Stability:	1 year
Predicted Protein Size:	Observed MW (kDa):80-97
Gene Name:	nuclear receptor subfamily 3 group C member 1
Database Link:	<a href="#">Entrez Gene 2908 Human P04150</a>
Background:	Swiss-Prot Acc.P04150.
Synonyms:	GCCR; GCR; GR; GRL



[View online »](#)

Product images:



Interest protein

Western blot analysis of Glucocorticoid Receptor in Hela, Jurkat, HepG2, mouse Liver, rat Brain lysates using GR antibody.