

Product datasheet for **TA384887**

Nucleophosmin (NPM1) Rabbit Polyclonal Antibody

Product data:

Product Type:	Primary Antibodies
Applications:	ELISA, IF, IHC, WB
Recommended Dilution:	WB: 1/500-1/2000 IHC: 1/100-1/300 IF: 1/200-1/1000 ELISA: 1/40000
Reactivity:	Human, Mouse, Rat
Host:	Rabbit
Isotype:	IgG
Clonality:	Polyclonal
Immunogen:	The antiserum was produced against synthesized peptide derived from human NPM around the phosphorylation site of Thr199. AA range:171-220 (Phosphorylated)
Formulation:	Liquid in PBS containing 50% glycerol, 0.5% BSA and 0.02% sodium azide, pH 7.3.
Concentration:	lot specific
Purification:	Affinity Chromatography
Conjugation:	Unconjugated
Storage:	Store at 4°C short term. Aliquot and store at -20°C long term. Avoid freeze/thaw cycles.
Stability:	1 year
Predicted Protein Size:	Observed MW (kDa):32
Gene Name:	nucleophosmin (nucleolar phosphoprotein B23, numatrin)
Database Link:	Entrez Gene 4869 Human P06748



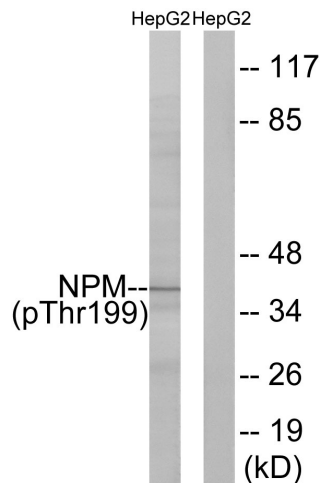
[View online »](#)

Background:

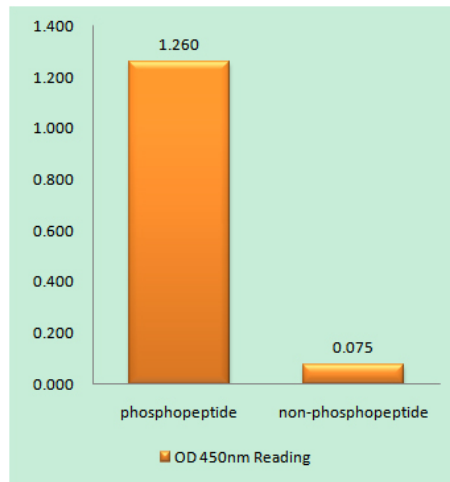
Swiss-Prot Acc.P06748. Involved in diverse cellular processes such as ribosome biogenesis, centrosome duplication, protein chaperoning, histone assembly, cell proliferation, and regulation of tumor suppressors p53/TP53 and ARF. Binds ribosome presumably to drive ribosome nuclear export. Associated with nucleolar ribonucleoprotein structures and bind single-stranded nucleic acids. Acts as a chaperonin for the core histones H3, H2B and H4. Stimulates APEX1 endonuclease activity on apurinic/aprimidinic (AP) double-stranded DNA but inhibits APEX1 endonuclease activity on AP single-stranded RNA. May exert a control of APEX1 endonuclease activity within nucleoli devoted to repair AP on rDNA and the removal of oxidized rRNA molecules. In concert with BRCA2, regulates centrosome duplication. Regulates centriole duplication: phosphorylation by PLK2 is able to trigger centriole replication. Negatively regulates the activation of EIF2AK2/PKR and suppresses apoptosis through inhibition of EIF2AK2/PKR autophosphorylation. Antagonizes the inhibitory effect of ATF5 on cell proliferation and relieves ATF5-induced G2/M blockade (PubMed:22528486). In complex with MYC enhances the transcription of MYC target genes (PubMed:25956029).

Synonyms:

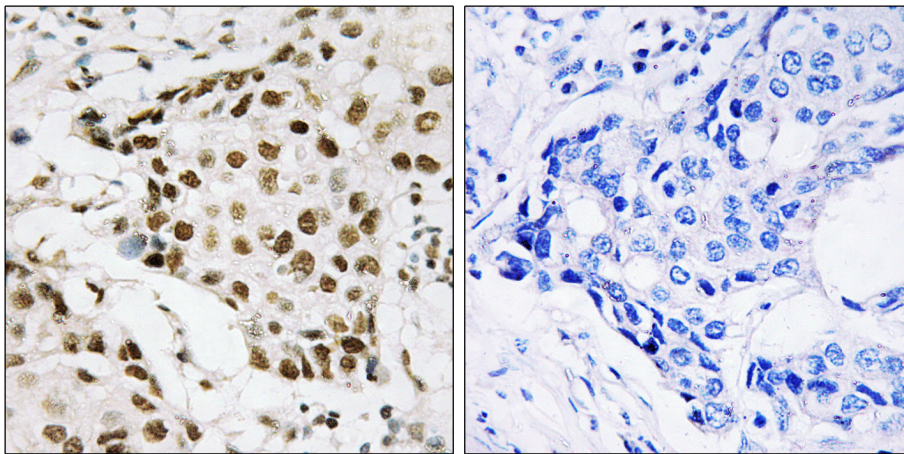
B23; MGC104254; NPM; Numatrin

Product images:


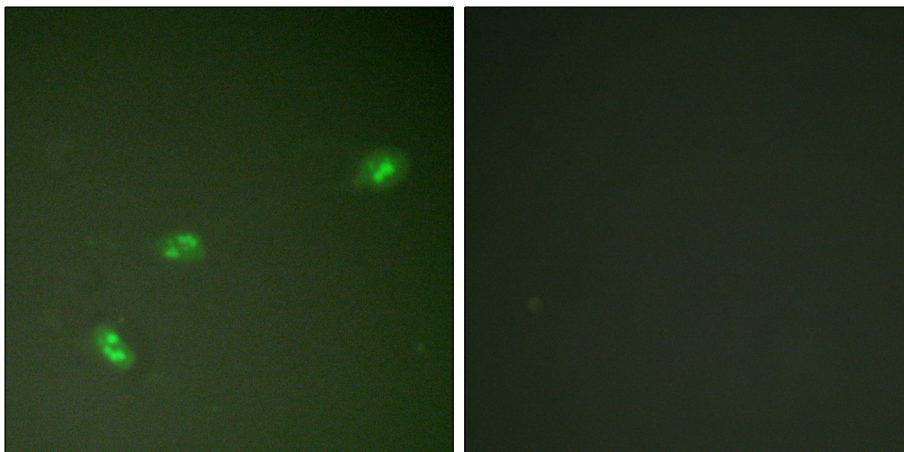
Western blot analysis of Phospho-B23 (Thr199) in HepG2 lysates using Phospho-B23 (Thr199) antibody. The lane on the right is blocked with the synthesized peptide.



EnzymeLinked Immunosorbent Assay (Phospho-ELISA) for Immunogen Phospho-peptide (Phospho-left) and NonPhospho-peptide (Phospho-right), using NPM (Phospho-Thr19antibody



Immunohistochemistry analysis of paraffin-embedded Human breast carcinoma using Phospho-B23 (Thr199) antibody. High-pressure and temperature Sodium Citrate pH 6.0 was used for antigen retrieval. Sample with blocking peptide on the right.



Immunofluorescence analysis of Phospho-B23 (Thr199) in HeLa treated with EGF using Phospho-B23 (Thr199) antibody. The picture on the right is blocked with the Phospho-peptide.