

Product datasheet for **TA384886**

Nucleophosmin (NPM1) Mouse Monoclonal Antibody [Clone ID: 2H9-1A3-9A4]

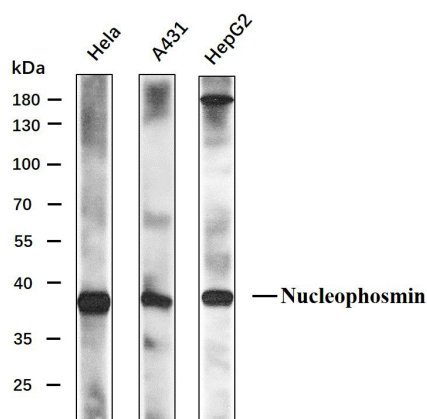
Product data:

Product Type:	Primary Antibodies
Clone Name:	2H9-1A3-9A4
Applications:	IHC
Recommended Dilution:	IHC-p: 1/100-1/500 WB: 1/500-1/2000
Reactivity:	Human
Host:	Mouse
Isotype:	IgG1, kappa
Clonality:	Monoclonal
Immunogen:	Synthesized peptide derived from human Nucleophosmin
Formulation:	Liquid in PBS containing 50% glycerol, 0.5% BSA and 0.02% sodium azide, pH 7.3.
Concentration:	lot specific
Purification:	Affinity Chromatography
Conjugation:	Unconjugated
Storage:	Store at 4°C short term. Aliquot and store at -20°C long term. Avoid freeze/thaw cycles.
Stability:	1 year
Gene Name:	nucleophosmin (nucleolar phosphoprotein B23, numatrin)
Database Link:	Entrez Gene 4869 Human P06748
Background:	Swiss-Prot Acc.P06748.
Synonyms:	B23; MGC104254; NPM; Numatrin



[View online »](#)

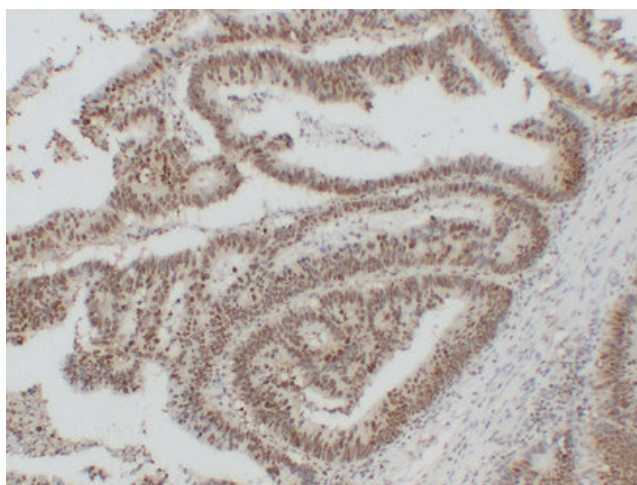
Product images:



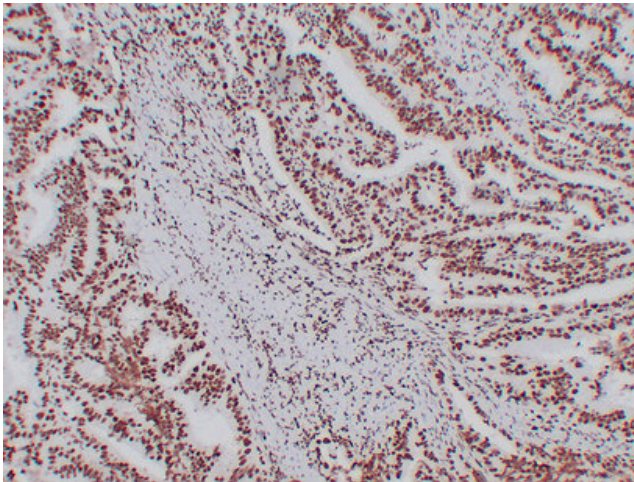
Various whole cell lysates (30ug) were separated by 10% SDS-PAGE, and the membrane was blotted with Nucleophosmin antibody. The HRP-conjugated anti-Mouse IgG antibody was used to detect the antibody.

Predicted band size: 33kDa
Observed band size: 37kDa

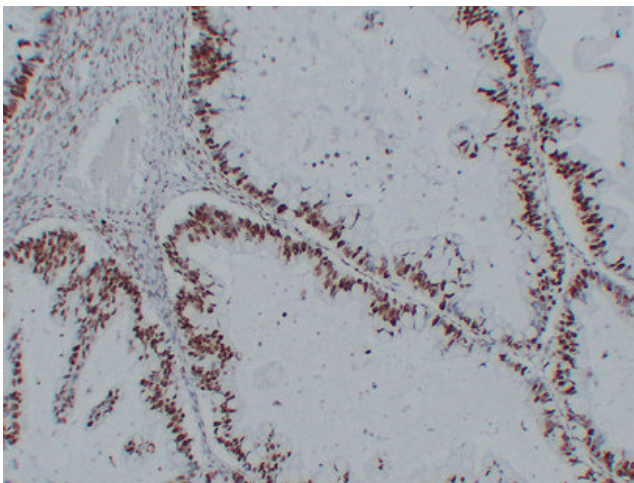
Western blot analysis of NucleophosminAntibody at 1:1000 dilution.



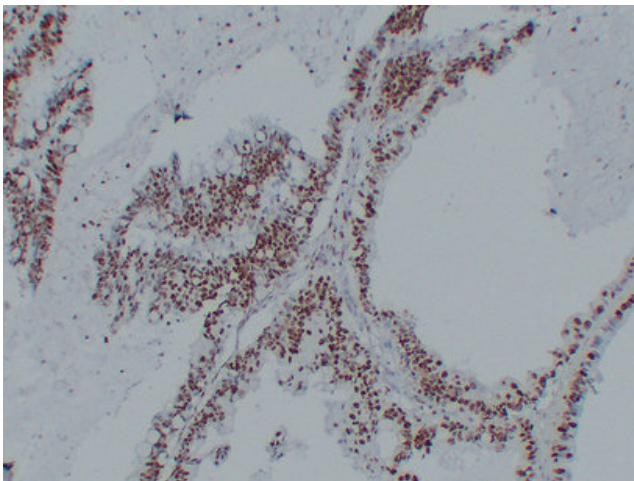
Immunohistochemical analysis of paraffin-embedded Colon carcinoma. 1, Antibody was diluted at 1:200(4°,overnight). 2, Citrate buffer of pH6.0 was used for antigen retrieval. 3,Secondary antibody was diluted at 1:200(room temperature, 30min).



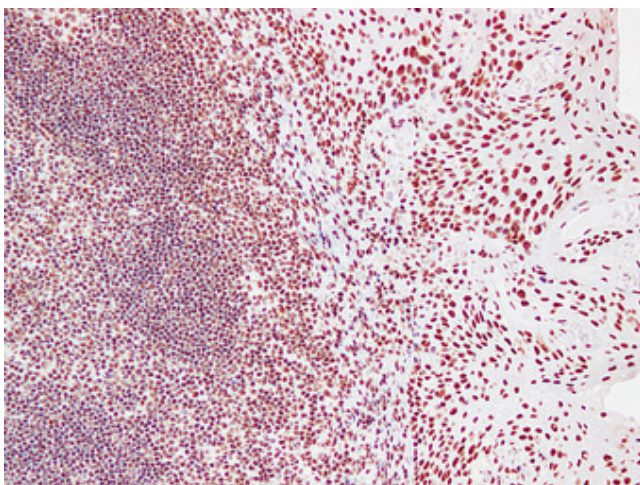
Immunohistochemical analysis of paraffin-embedded Colorectal adenocarcinoma. 1, Antibody was diluted at 1:200(4°,overnight). 2, Citrate buffer of pH6.0 was used for antigen retrieval. 3,Secondary antibody was diluted at 1:200(room temperature, 30min).



Immunohistochemical analysis of paraffin-embedded Ovarian mucinous cystadenocarcinoma. 1, Antibody was diluted at 1:200(4°,overnight). 2, Citrate buffer of pH6.0 was used for antigen retrieval. 3,Secondary antibody was diluted at 1:200(room temperature, 30min).



Immunohistochemical analysis of paraffin-embedded Ovarian mucinous cystadenocarcinoma. 1, Antibody was diluted at 1:200(4°,overnight). 2, Citrate buffer of pH6.0 was used for antigen retrieval. 3,Secondary antibody was diluted at 1:200(room temperature, 30min).



Immunohistochemical analysis of paraffin-embedded Tonsil. 1, Antibody was diluted at 1:200(4°, overnight). 2, Citrate buffer of pH6.0 was used for antigen retrieval. 3, Secondary antibody was diluted at 1:200(room temperature, 30min).