

Product datasheet for **TA384883**

NOTCH1 Rabbit Polyclonal Antibody

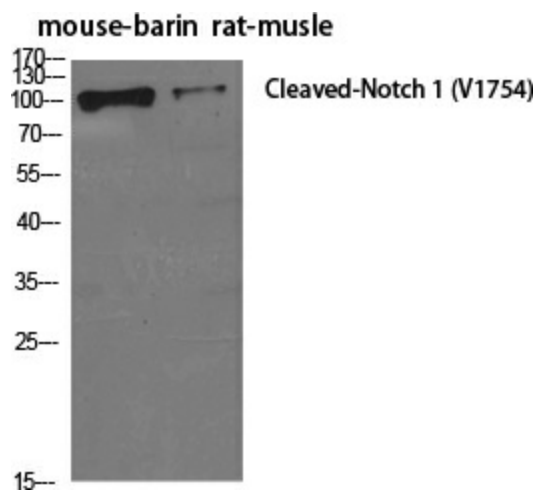
Product data:

Product Type:	Primary Antibodies
Applications:	ELISA, IF, IHC, WB
Recommended Dilution:	WB: 1/500-2000 IHC-p: 1/50-300 IF: 1/50-300
Reactivity:	Human, Mouse, Rat
Host:	Rabbit
Isotype:	IgG
Clonality:	Polyclonal
Immunogen:	The antiserum was produced against synthesized peptide derived from human Notch 1. AA range:1735-1784 (Cleaved)
Formulation:	Liquid in PBS containing 50% glycerol, 0.5% BSA and 0.02% sodium azide, pH 7.3.
Concentration:	lot specific
Purification:	Affinity Purified
Conjugation:	Unconjugated
Storage:	Store at 4°C short term. Aliquot and store at -20°C long term. Avoid freeze/thaw cycles.
Stability:	1 year
Predicted Protein Size:	Observed MW (kDa):110
Gene Name:	notch 1
Database Link:	Entrez Gene 4851 Human P46531
Background:	Swiss-Prot Acc.P46531.
Synonyms:	hN1; TAN1



[View online »](#)

Product images:



Western blot analysis of Cleaved-Notch1 in various lysates using Cleaved-Notch1 antibody.