

## Product datasheet for **TA384882M**

### eNOS (NOS3) Rabbit Polyclonal Antibody

#### Product data:

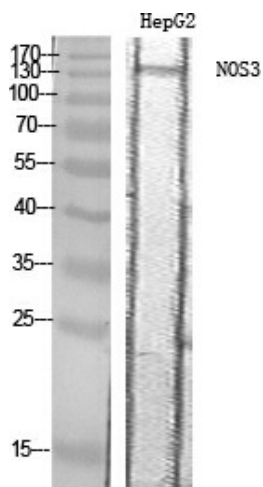
Product Type:	Primary Antibodies
Applications:	ELISA, IF, IHC, WB
Recommended Dilution:	WB: 1/500-1/2000 IHC: 1/100-1/300 IF: 1/200-1/1000 ELISA: 1/40000
Reactivity:	Human, Mouse, Rat
Host:	Rabbit
Isotype:	IgG
Clonality:	Polyclonal
Immunogen:	The antiserum was produced against synthesized peptide derived from human eNOS. AA range:1144-1193
Formulation:	Liquid in PBS containing 50% glycerol, 0.5% BSA and 0.02% sodium azide, pH 7.3.
Concentration:	lot specific
Purification:	Affinity Chromatography
Conjugation:	Unconjugated
Storage:	Store at 4°C short term. Aliquot and store at -20°C long term. Avoid freeze/thaw cycles.
Stability:	1 year
Predicted Protein Size:	Observed MW (kDa):140
Gene Name:	nitric oxide synthase 3
Database Link:	<a href="#">Entrez Gene 4846 Human P29474</a>
Background:	Swiss-Prot Acc.P29474.Produces nitric oxide (NO) which is implicated in vascular smooth muscle relaxation through a cGMP-mediated signal transduction pathway. NO mediates vascular endothelial growth factor (VEGF)-induced angiogenesis in coronary vessels and promotes blood clotting through the activation of platelets.Isoform eNOS13C: Lacks eNOS activity, dominant-negative form that may down-regulate eNOS activity by forming heterodimers with isoform 1.



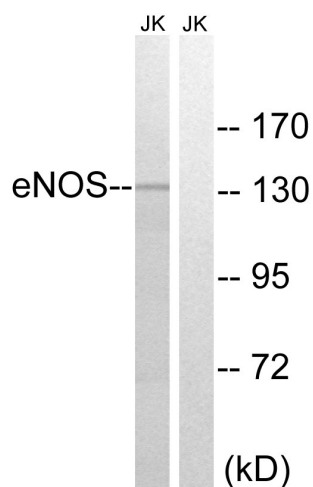
[View online »](#)

**Synonyms:** cNOS; EC-NOS; ECNOS; eNOS; NOSIII

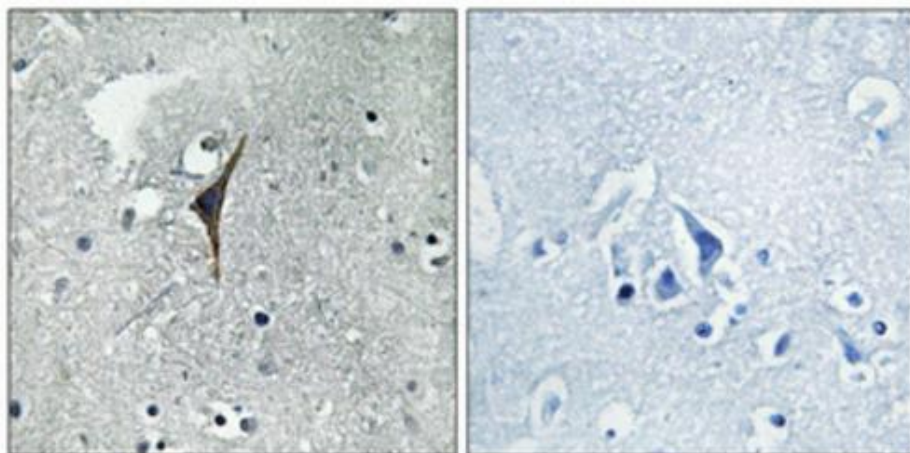
**Product images:**



Western blot analysis of eNOS in HepG2 lysates using eNOS antibody.



Western blot analysis of lysates from Jurkat cells, treated with Insulin 0.01U/ml 15', using eNOS Antibody. The lane on the right is blocked with the synthesized peptide.



Immunohistochemical analysis of paraffin-embedded Human brain. Antibody was diluted at 1:1(4°,overnight). High-pressure and temperature Tris-EDTA,pH8. was used for antigen retrieval. Negative contrl (right) obtained from antibody was pre-absorbed by immunogen peptide.