

Product datasheet for **TA384881M**

eNOS (NOS3) Mouse Monoclonal Antibody [Clone ID: 2E8-5A5-7B1]

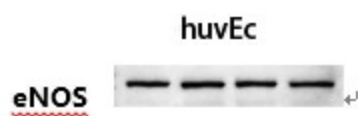
Product data:

Product Type:	Primary Antibodies
Clone Name:	2E8-5A5-7B1
Applications:	WB
Recommended Dilution:	WB: 1/500-2000
Reactivity:	Human, Mouse, Rat
Host:	Mouse
Isotype:	IgG1
Clonality:	Monoclonal
Immunogen:	Recombinant Protein of eNOS
Formulation:	Liquid in PBS containing 50% glycerol, 0.5% BSA and 0.03% Proclin 300, pH 7.3.
Concentration:	lot specific
Purification:	Affinity Purified
Conjugation:	Unconjugated
Storage:	Store at 4°C short term. Aliquot and store at -20°C long term. Avoid freeze/thaw cycles.
Stability:	1 year
Predicted Protein Size:	Observed MW (kDa):130
Gene Name:	nitric oxide synthase 3
Database Link:	Entrez Gene 4846 Human P29474
Background:	Swiss-Prot Acc.P29474.Produces nitric oxide (NO) which is implicated in vascular smooth muscle relaxation through a cGMP-mediated signal transduction pathway. NO mediates vascular endothelial growth factor (VEGF)-induced angiogenesis in coronary vessels and promotes blood clotting through the activation of platelets.Isoform eNOS13C: Lacks eNOS activity, dominant-negative form that may down-regulate eNOS activity by forming heterodimers with isoform 1.
Synonyms:	cNOS; EC-NOS; ECNOS; eNOS; NOSIII



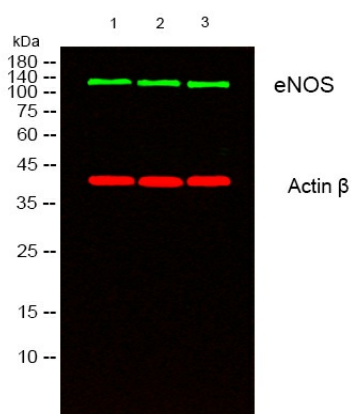
[View online »](#)

Product images:

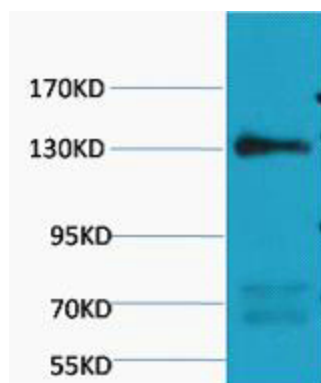


The picture was kindly provided by our customer

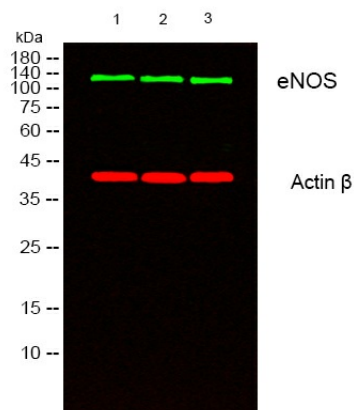
Wuhan Tongji Hospital



Western blot analysis of lysates from 1) Rat Heart Tissue, 2) huvec, 3) Jurkat cells, □Green□ primary antibody was diluted at 1:1000, 4° over night, secondary antibody was diluted at 1:10000, 37° 1 hour. □Red□ Actin β Polyclonal Antibody was diluted at 1:5000 as loading control, 4°C over night, secondary antibody was diluted at 1:10000, 37° 1 hour.



Western blot analysis of Rat Heart Tissue, diluted at 1:1000.



Western blot analysis of lysates from 1) Rat Heart Tissue, 2) huvec ,3) Jurkat cells, (Green) primary antibody was diluted at 1:1000, 4°over night, secondary antibody was diluted at 1:10000, 37° 1hour. (Red) Actin β Polyclonal Antibody was diluted at 1:5000 as loading control, 4°C over night,secondary antibody was diluted at 1:10000, 37° 1hour.