

## Product datasheet for **TA384879**

### **NOP56 Rabbit Polyclonal Antibody**

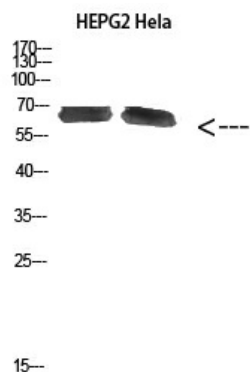
#### **Product data:**

Product Type:	Primary Antibodies
Applications:	ELISA, IHC, WB
Recommended Dilution:	WB: 1/500-2000
Reactivity:	Human, Mouse, Rat
Host:	Rabbit
Isotype:	IgG
Clonality:	Polyclonal
Immunogen:	Synthesized peptide derived from NOP56 at AA range: 191-240
Formulation:	Liquid in PBS containing 50% glycerol, 0.5% BSA and 0.02% sodium azide, pH 7.3.
Concentration:	lot specific
Purification:	Affinity Purified
Conjugation:	Unconjugated
Storage:	Store at 4°C short term. Aliquot and store at -20°C long term. Avoid freeze/thaw cycles.
Stability:	1 year
Predicted Protein Size:	Observed MW (kDa):65
Database Link:	<a href="#">O00567</a>
Background:	Swiss-Prot Acc.O00567.

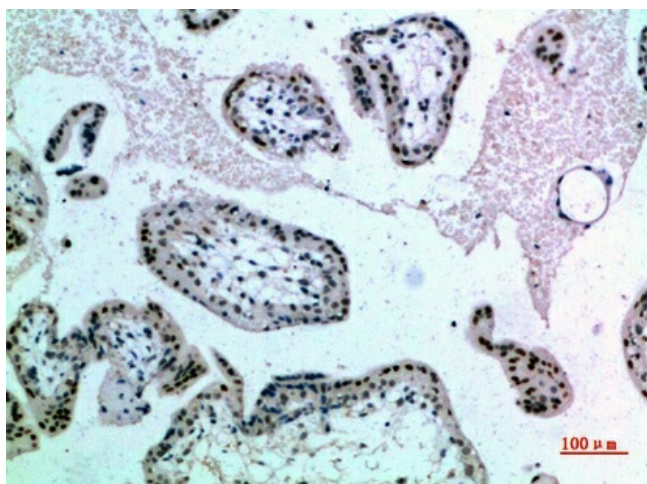


[View online »](#)

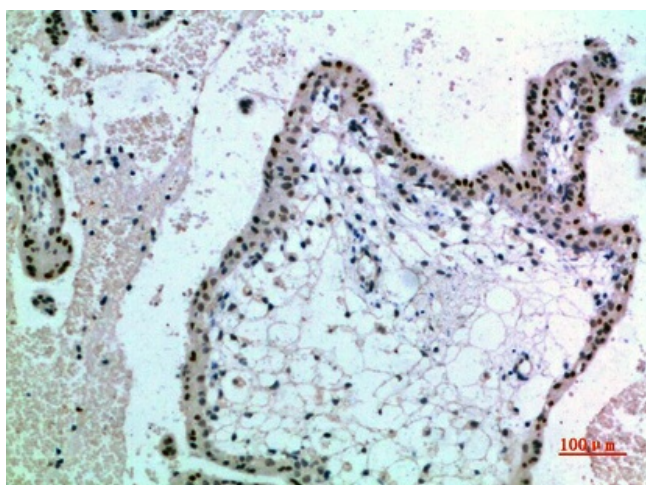
## Product images:



Western blot analysis of NOP56 in HEPG2 , HeLa lysates using NOP56 antibody.



Immunohistochemistry analysis of paraffin-embedded Human placenta using NOP56 antibody.High-pressure and temperature Sodium Citrate pH 6.0 was used for antigen retrieval.



Immunohistochemistry analysis of paraffin-embedded Human placenta using NOP56 antibody. High-pressure and temperature Sodium Citrate pH 6.0 was used for antigen retrieval.