

## Product datasheet for **TA384878**

### NMBR Rabbit Polyclonal Antibody

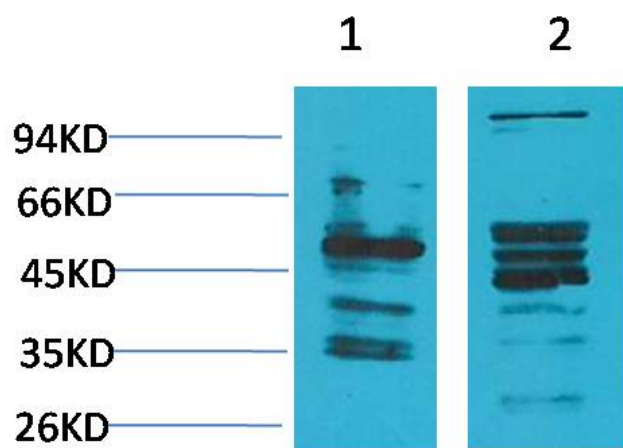
#### Product data:

|                         |  |
|-------------------------|--|
| Product Type:           | Primary Antibodies   |
| Applications:           | IHC, WB  |
| Recommended Dilution:   | WB: 1/1000-2000<br>IHC: 1/200-500  |
| Reactivity:             | Human, Mouse, Rat  |
| Host:                   | Rabbit   |
| Isotype:                | IgG  |
| Clonality:              | Polyclonal   |
| Immunogen:              | Synthetic Peptide of NMBR  |
| Formulation:            | Liquid in PBS containing 50% glycerol, 0.5% BSA and 0.02% sodium azide, pH 7.3.          |
| Concentration:          | lot specific   |
| Purification:           | Affinity Purified  |
| Conjugation:            | Unconjugated   |
| Storage:                | Store at 4°C short term. Aliquot and store at -20°C long term. Avoid freeze/thaw cycles. |
| Stability:              | 1 year   |
| Predicted Protein Size: | Observed MW (kDa):50   |
| Gene Name:              | neuromedin B receptor  |
| Database Link:          | <a href="#">Entrez Gene 4829 Human P28336</a>  |
| Background:             | Swiss-Prot Acc.P28336.   |
| Synonyms:               | NMB-R  |



[View online »](#)

## Product images:



Western blot analysis of Neuromedin B Receptor in Human Brain, rat Brain lysates using NMBR(Bombesin Receptor)antibody.