

Product datasheet for **TA384876M**

TTF1 (NKX2-1) Rabbit Monoclonal Antibody [Clone ID: R02-6A5]

Product data:

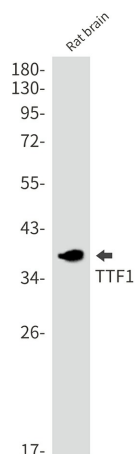
Product Type:	Primary Antibodies
Clone Name:	R02-6A5
Applications:	IHC, IP, WB
Recommended Dilution:	WB: 1/1000 IHC: 1/50-1/100 IP: 1/20
Reactivity:	Human, Mouse, Rat
Host:	Rabbit
Isotype:	IgG
Clonality:	Monoclonal
Immunogen:	A synthetic peptide of human TTF1
Formulation:	50mM Tris-Glycine(pH 7.4), 0.15M NaCl, 40% Glycerol, 0.01% Sodium azide and 0.05% BSA
Concentration:	lot specific
Purification:	Affinity Purified
Conjugation:	Unconjugated
Storage:	Store at 4°C short term. Aliquot and store at -20°C long term. Avoid freeze/thaw cycles.
Stability:	1 year
Predicted Protein Size:	Calculated MW: 39 kDa; Observed MW: 39 kDa
Gene Name:	NK2 homeobox 1
Database Link:	Entrez Gene 7080 Human P43699
Background:	Swiss-Prot Acc.P43699.Transcription factor that binds and activates the promoter of thyroid specific genes such as thyroglobulin, thyroperoxidase, and thyrotropin receptor. Crucial in the maintenance of the thyroid differentiation phenotype. May play a role in lung development and surfactant homeostasis. Forms a regulatory loop with GRHL2 that coordinates lung epithelial cell morphogenesis and differentiation. Activates the transcription of GNRHR and plays a role in enhancing the circadian oscillation of its gene expression. Represses the transcription of the circadian transcriptional repressor NR1D1 .



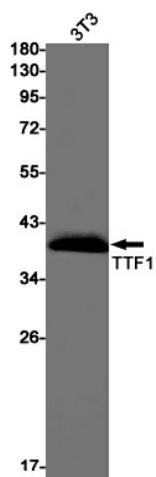
[View online »](#)

Synonyms: BCH; BHC; NK-2; NKX2.1; NKX2A; TEBP; TITF1; TTF-1; TTF1

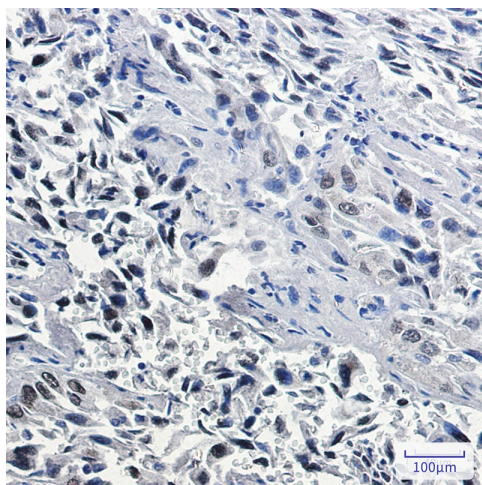
Product images:



Western blot analysis of TTF1 in rat brain lysates using Thyroid Transcription Factor 1 antibody.



Western blot analysis of TTF1 in 3T3 lysates using TTF1 antibody.



Immunohistochemistry analysis of paraffin-embedded Human lung cancer using TTF1 antibody. High-pressure and temperature Sodium Citrate pH 6.0 was used for antigen retrieval.