

Product datasheet for **TA384874M**

XLF (NHEJ1) Rabbit Monoclonal Antibody [Clone ID: R08-9D7]

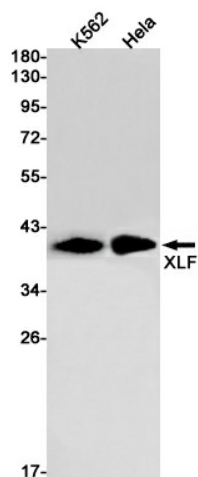
Product data:

Product Type:	Primary Antibodies
Clone Name:	R08-9D7
Applications:	WB
Recommended Dilution:	WB: 1/1000
Reactivity:	Human, Mouse, Rat
Host:	Rabbit
Isotype:	IgG
Clonality:	Monoclonal
Immunogen:	Recombinant protein of human XLF
Formulation:	50mM Tris-Glycine(pH 7.4), 0.15M NaCl, 40% Glycerol, 0.01% Sodium azide and 0.05% BSA
Concentration:	lot specific
Purification:	Affinity Purified
Conjugation:	Unconjugated
Storage:	Store at 4°C short term. Aliquot and store at -20°C long term. Avoid freeze/thaw cycles.
Stability:	1 year
Predicted Protein Size:	Calculated MW: 33 kDa; Observed MW: 39 kDa
Gene Name:	non-homologous end joining factor 1
Database Link:	Entrez Gene 79840 Human Q9H9Q4
Background:	Swiss-Prot Acc.Q9H9Q4.DNA repair protein involved in DNA nonhomologous end joining (NHEJ) required for double-strand break (DSB) repair and V(D)J recombination. May serve as a bridge between XRCC4 and the other NHEJ factors located at DNA ends, or may participate in reconfiguration of the end bound NHEJ factors to allow XRCC4 access to the DNA termini. It may act in concert with XRCC6/XRCC5 (Ku) to stimulate XRCC4-mediated joining of blunt ends and several types of mismatched ends that are noncomplementary or partially complementary (PubMed:16439204, PubMed:16439205, PubMed:17470781). Binds DNA in a length-dependent manner (PubMed:17317666).


[View online »](#)

Synonyms: Cernunnos; FLJ12610; XLF

Product images:



Western blot analysis of XLF in K562, HeLa lysates using XLF antibody.