

Product datasheet for **TA384873**

NGF Rabbit Polyclonal Antibody

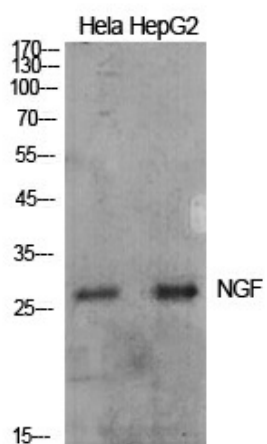
Product data:

Product Type:	Primary Antibodies
Applications:	ELISA, IHC, WB
Recommended Dilution:	WB: 1/500-2000 IHC: 1/50-300
Reactivity:	Human
Host:	Rabbit
Isotype:	IgG
Clonality:	Polyclonal
Immunogen:	The antiserum was produced against synthesized peptide derived from the Internal region of human NGF. AA range:141-190
Formulation:	Liquid in PBS containing 50% glycerol, 0.5% BSA and 0.02% sodium azide, pH 7.3.
Concentration:	lot specific
Purification:	Affinity Purified
Conjugation:	Unconjugated
Storage:	Store at 4°C short term. Aliquot and store at -20°C long term. Avoid freeze/thaw cycles.
Stability:	1 year
Predicted Protein Size:	Observed MW (kDa):27
Gene Name:	nerve growth factor
Database Link:	Entrez Gene 4803 Human P01138
Background:	Swiss-Prot Acc.P01138.
Synonyms:	Beta-NGF; HSN5; MGC161426; MGC161428; NGFB; NID67



[View online »](#)

Product images:



Western blot analysis of NGF in HeLa, HepG2 lysates using NGF antibody.