

Product datasheet for **TA384872M**

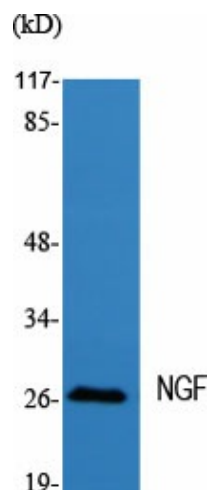
NGF Rabbit Polyclonal Antibody

Product data:

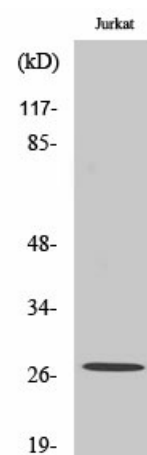
Product Type:	Primary Antibodies
Applications:	ELISA, IHC, WB
Recommended Dilution:	WB: 1/500-1/2000 IHC: 1/100-1/300 ELISA: 1/40000
Reactivity:	Human, Mouse, Rat
Host:	Rabbit
Isotype:	IgG
Clonality:	Polyclonal
Immunogen:	The antiserum was produced against synthesized peptide derived from human NGF. AA range:33-82
Formulation:	Liquid in PBS containing 50% glycerol, 0.5% BSA and 0.02% sodium azide, pH 7.3.
Concentration:	lot specific
Purification:	Affinity Purified
Conjugation:	Unconjugated
Storage:	Store at 4°C short term. Aliquot and store at -20°C long term. Avoid freeze/thaw cycles.
Stability:	1 year
Predicted Protein Size:	Observed MW (kDa):27
Gene Name:	nerve growth factor
Database Link:	Entrez Gene 4803 Human P01138
Background:	Swiss-Prot Acc.P01138.
Synonyms:	Beta-NGF; HSN5; MGC161426; MGC161428; NGFB; NID67

[View online »](#)

Product images:



Western blot analysis of NGF in various lysates using NGF antibody.



Western blot analysis of NGF in Jurkat lysates using NGF antibody.