

Product datasheet for **TA384871**

IKB epsilon (NFKBIE) Rabbit Polyclonal Antibody

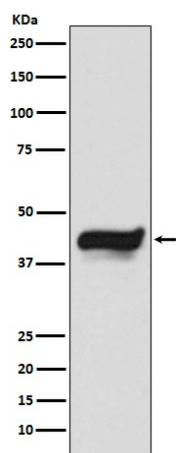
Product data:

Product Type:	Primary Antibodies
Applications:	IF, IHC, IP, WB
Recommended Dilution:	WB: 1/500-1/2000 IHC: 1/50-1/200 ICC/IF: 1/50-1/200 IP: 1/50
Reactivity:	Human
Host:	Rabbit
Isotype:	IgG
Clonality:	Polyclonal
Immunogen:	A synthesized peptide derived from human IKB epsilon
Formulation:	Rabbit IgG in phosphate buffered saline , pH 7.4, 150mM NaCl, 0.02% sodium azide and 50% glycerol.
Concentration:	lot specific
Purification:	Affinity Chromatography
Conjugation:	Unconjugated
Storage:	Store at 4°C short term. Aliquot and store at -20°C long term. Avoid freeze/thaw cycles.
Stability:	1 year
Predicted Protein Size:	45kDa
Gene Name:	NFKB inhibitor epsilon
Database Link:	Entrez Gene 4794 Human O00221
Background:	Swiss-Prot Acc.O00221.Inhibits NF-kappa-B by complexing with and trapping it in the cytoplasm. Inhibits DNA-binding of NF-kappa-B p50-p65 and p50-c-Rel complexes.
Synonyms:	I-kappa-B-epsilon; IkappaBepsilon; Ikb-E; Ikb-epsilon; IKBE; NF-kappa-BIE



[View online »](#)

Product images:



Western blot analysis of IKB epsilon in HeLa lysates using IKB epsilon antibody.