

Product datasheet for **TA384870M**

IKB beta (NFKBIB) Rabbit Monoclonal Antibody [Clone ID: R02-3C1]

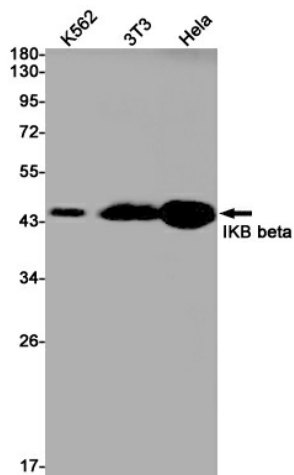
Product data:

Product Type:	Primary Antibodies
Clone Name:	R02-3C1
Applications:	IHC, IP, WB
Recommended Dilution:	WB: 1/1000 IHC: 1/50 IP: 1/20
Reactivity:	Human, Mouse
Host:	Rabbit
Isotype:	IgG
Clonality:	Monoclonal
Immunogen:	A synthetic peptide of human IKB beta
Formulation:	50mM Tris-Glycine(pH 7.4), 0.15M NaCl, 40% Glycerol, 0.01% Sodium azide and 0.05% BSA
Concentration:	lot specific
Purification:	Affinity Purified
Conjugation:	Unconjugated
Storage:	Store at 4°C short term. Aliquot and store at -20°C long term. Avoid freeze/thaw cycles.
Stability:	1 year
Predicted Protein Size:	Calculated MW: 38 kDa; Observed MW: 48 kDa
Gene Name:	NFKB inhibitor beta
Database Link:	Entrez Gene 4793 Human Q15653
Background:	Swiss-Prot Acc.Q15653.Inhibits NF-kappa-B by complexing with and trapping it in the cytoplasm. However, the unphosphorylated form resynthesized after cell stimulation is able to bind NF-kappa-B allowing its transport to the nucleus and protecting it to further NFKBIA-dependent inactivation. Association with inhibitor kappa B-interacting NKIRAS1 and NKIRAS2 prevent its phosphorylation rendering it more resistant to degradation, explaining its slower degradation.

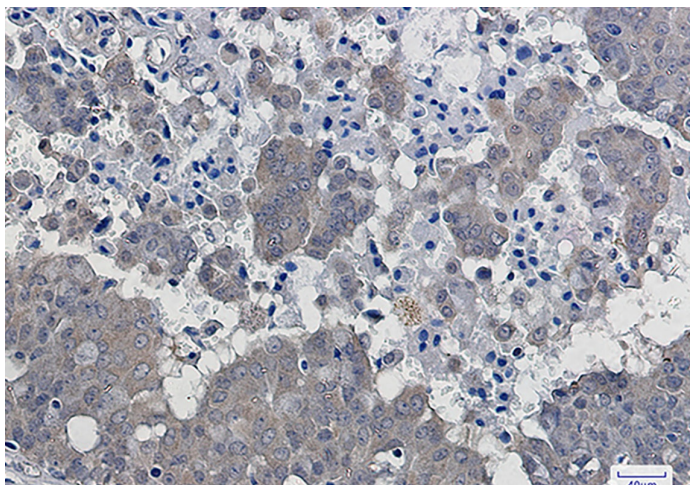

[View online »](#)

Synonyms: I-kappa-B-beta; IkappaBbeta; Ikb-B; Ikb-beta; IKBB; NF-kappa-BIB; TRIP-9; TRIP9

Product images:



Western blot analysis of IKB beta in K562, 3T3, HeLa lysates using IKB beta antibody.



Immunohistochemistry analysis of paraffin-embedded Human breast cancer using IKB beta antibody. High-pressure and temperature Sodium Citrate pH 6.0 was used for antigen retrieval.