

Product datasheet for **TA384869**

IKB beta (NFKBIB) Rabbit Polyclonal Antibody

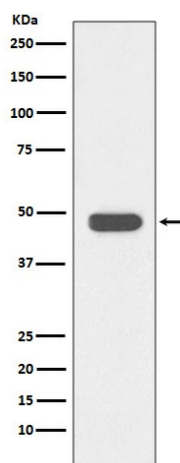
Product data:

| | |
|--------------------------------|--|
| Product Type: | Primary Antibodies |
| Applications: | IF, IHC, IP, WB |
| Recommended Dilution: | WB: 1/500-1/2000 IHC: 1/50-1/200 ICC/IF: 1/50-1/200 IP: 1/50 |
| Reactivity: | Human |
| Host: | Rabbit |
| Isotype: | IgG |
| Clonality: | Polyclonal |
| Immunogen: | A synthesized peptide derived from human IKB beta |
| Formulation: | Rabbit IgG in phosphate buffered saline , pH 7.4, 150mM NaCl, 0.02% sodium azide and 50% glycerol. |
| Concentration: | lot specific |
| Purification: | Affinity Chromatography |
| Conjugation: | Unconjugated |
| Storage: | Store at 4°C short term. Aliquot and store at -20°C long term. Avoid freeze/thaw cycles. |
| Stability: | 1 year |
| Predicted Protein Size: | 48kDa |
| Gene Name: | NFKB inhibitor beta |
| Database Link: | Entrez Gene 4793 Human Q15653 |
| Background: | Swiss-Prot Acc.Q15653.kB-beta a protein of the NF-kappa-B inhibitor family. Inhibits NF-kappa-B by complexing with and trapping it in the cytoplasm. However, the unphosphorylated form resynthesized after cell stimulation is able to bind NF-kappa-B allowing its transport to the nucleus and protecting it to further IKBA- dependent inactivation. |
| Synonyms: | I-kappa-B-beta; IkappaBbeta; IKB-B; IKB-beta; IKBB; NF-kappa-BIB; TRIP-9; TRIP9 |

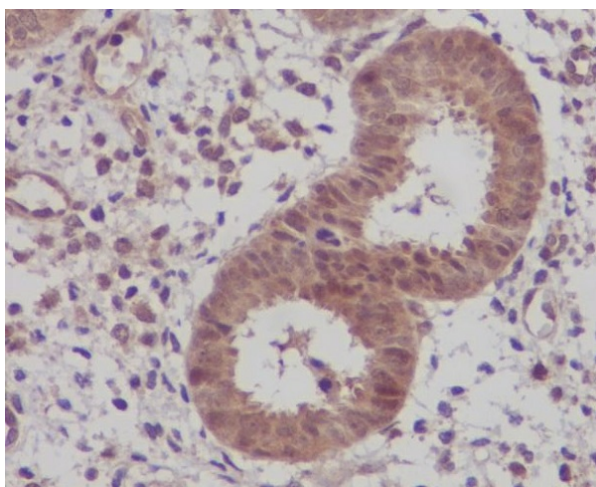


[View online »](#)

Product images:



Western blot analysis of IKB beta in Jurkat lysates using IKB beta antibody.



Immunohistochemical analysis of paraffin-embedded human uterus, using IKB beta Antibody.