

## Product datasheet for **TA384866S**

### **IKB alpha (NFKBIA) Rabbit Monoclonal Antibody [Clone ID: R05-4K3]**

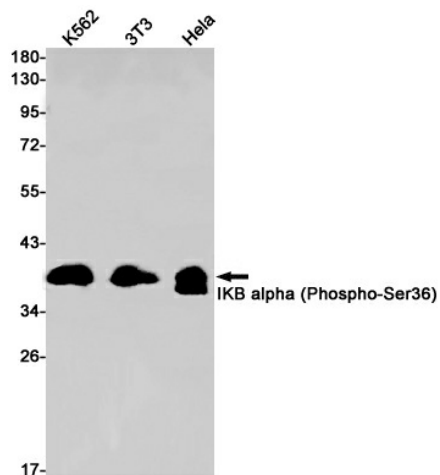
#### **Product data:**

<b>Product Type:</b>	Primary Antibodies
<b>Clone Name:</b>	R05-4K3
<b>Applications:</b>	WB
<b>Recommended Dilution:</b>	WB: 1/2000-1/10000
<b>Reactivity:</b>	Human, Mouse
<b>Host:</b>	Rabbit
<b>Isotype:</b>	IgG
<b>Clonality:</b>	Monoclonal
<b>Immunogen:</b>	A synthetic phosphopeptide corresponding to residues surrounding Ser36 of human IKB alpha (Phosphorylated)
<b>Formulation:</b>	50mM Tris-Glycine(pH 7.4), 0.15M NaCl, 40% Glycerol, 0.01% Sodium azide and 0.05% BSA
<b>Concentration:</b>	lot specific
<b>Purification:</b>	Affinity Purified
<b>Conjugation:</b>	Unconjugated
<b>Storage:</b>	Store at 4°C short term. Aliquot and store at -20°C long term. Avoid freeze/thaw cycles.
<b>Stability:</b>	1 year
<b>Predicted Protein Size:</b>	Calculated MW: 36 kDa; Observed MW: 39 kDa
<b>Gene Name:</b>	NFKB inhibitor alpha
<b>Database Link:</b>	<a href="#">Entrez Gene 4792 Human P25963</a>
<b>Background:</b>	Swiss-Prot Acc.P25963.Inhibits the activity of dimeric NF-kappa-B/REL complexes by trapping REL dimers in the cytoplasm through masking of their nuclear localization signals. On cellular stimulation by immune and proinflammatory responses, becomes phosphorylated promoting ubiquitination and degradation, enabling the dimeric RELA to translocate to the nucleus and activate transcription.
<b>Synonyms:</b>	I-kappa-B-alpha; IkappaBalpha; Ikb-alpha; IKBA; MAD-3; MAD3; NFKBI



[View online »](#)

## Product images:



Western blot analysis of IKB alpha (Phospho-Ser36) in K562, 3T3, HeLa lysates using Phospho-IKB alpha (Ser36) antibody.