

## Product datasheet for **TA384863S**

### **IKB alpha (NFKBIA) Rabbit Monoclonal Antibody [Clone ID: R06-9E9]**

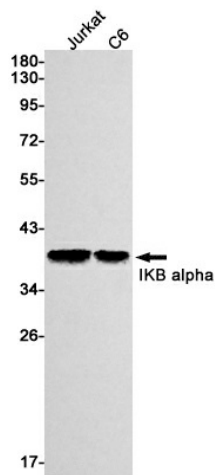
#### **Product data:**

Product Type:	Primary Antibodies
Clone Name:	R06-9E9
Applications:	WB
Recommended Dilution:	WB: 1/2000
Reactivity:	Human, Rat
Host:	Rabbit
Isotype:	IgG
Clonality:	Monoclonal
Immunogen:	A synthetic peptide of human IKB alpha
Formulation:	50mM Tris-Glycine(pH 7.4), 0.15M NaCl, 40% Glycerol, 0.01% Sodium azide and 0.05% BSA
Concentration:	lot specific
Purification:	Affinity Purified
Conjugation:	Unconjugated
Storage:	Store at 4°C short term. Aliquot and store at -20°C long term. Avoid freeze/thaw cycles.
Stability:	1 year
Predicted Protein Size:	Calculated MW: 36 kDa; Observed MW: 39 kDa
Gene Name:	NFKB inhibitor alpha
Database Link:	<a href="#">Entrez Gene 4792 Human P25963</a>
Background:	Swiss-Prot Acc.P25963.
Synonyms:	I-kappa-B-alpha; IkappaBalpha; Ikb-alpha; IKBA; MAD-3; MAD3; NFKBI



[View online »](#)

## Product images:



Western blot detection of IKB alpha in Jurkat, C6 cell lysates using IKB alpha Rabbit mAb (1:1000 diluted). Predicted band size: 36 kDa. Observed band size: 39 kDa.