

Product datasheet for **TA384861M**

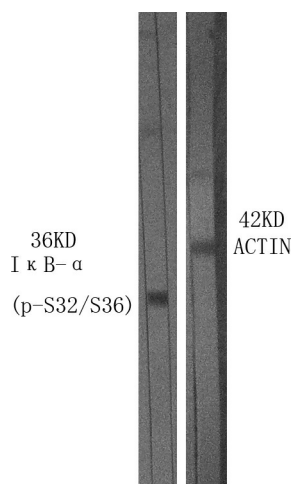
IKB alpha (NFKBIA) Rabbit Polyclonal Antibody

Product data:

Product Type:	Primary Antibodies
Applications:	ELISA, IF, IHC, WB
Recommended Dilution:	WB: 1/500-1/2000 IHC: 1/100-1/300 IF: 1/200-1/1000 ELISA: 1/10000
Reactivity:	Human, Mouse, Rat, Monkey
Host:	Rabbit
Isotype:	IgG
Clonality:	Polyclonal
Immunogen:	The antiserum was produced against synthesized peptide derived from human IkappaB-alpha around the phosphorylation site of Ser32/Ser36. AA range:15-64 (Phosphorylated)
Formulation:	Liquid in PBS containing 50% glycerol, 0.5% BSA and 0.02% sodium azide, pH 7.3.
Concentration:	lot specific
Purification:	Affinity Purified
Conjugation:	Unconjugated
Storage:	Store at 4°C short term. Aliquot and store at -20°C long term. Avoid freeze/thaw cycles.
Stability:	1 year
Predicted Protein Size:	Observed MW (kDa):34
Gene Name:	NFKB inhibitor alpha
Database Link:	Entrez Gene 4792 Human P25963
Background:	Swiss-Prot Acc.P25963.
Synonyms:	I-kappa-B-alpha; IkappaBalpha; IkB-alpha; IKBA; MAD-3; MAD3; NFKBI


[View online »](#)

Product images:



Western blot analysis of Phospho-IKB alpha (Ser32/Ser36) in various lysates using Phospho-IKB alpha (Ser32/Ser36) antibody.