

## Product datasheet for **TA384858**

### **NFKB1 Rabbit Polyclonal Antibody**

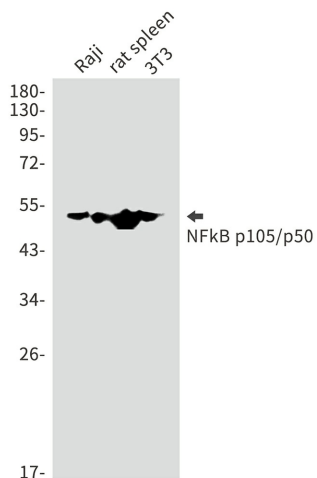
#### **Product data:**

<b>Product Type:</b>	Primary Antibodies
<b>Applications:</b>	IHC, WB
<b>Recommended Dilution:</b>	WB: 1/1000-1/2000 IHC: 1/50-1/200
<b>Reactivity:</b>	Human, Mouse, Rat
<b>Host:</b>	Rabbit
<b>Isotype:</b>	IgG
<b>Clonality:</b>	Polyclonal
<b>Immunogen:</b>	A synthetic peptide of human NFkB p105/p50
<b>Formulation:</b>	50mM Tris-Glycine(pH 7.4), 0.15M NaCl, 40% Glycerol, 0.01% Sodium azide and 0.05% BSA
<b>Concentration:</b>	lot specific
<b>Purification:</b>	Affinity Purified
<b>Conjugation:</b>	Unconjugated
<b>Storage:</b>	Store at 4°C short term. Aliquot and store at -20°C long term. Avoid freeze/thaw cycles.
<b>Stability:</b>	1 year
<b>Predicted Protein Size:</b>	Calculated MW: 105 kDa; Observed MW: 105,50 kDa
<b>Gene Name:</b>	nuclear factor kappa B subunit 1
<b>Database Link:</b>	<a href="#">Entrez Gene 4790 Human P19838</a>
<b>Background:</b>	Swiss-Prot Acc.P19838.
<b>Synonyms:</b>	DKFZp686C01211; EBP-1; KBF1; MGC54151; NF-kappa-B; NF-kappaB; NF-kappabeta; NFKB-p50; NFKB-p105; p50; p105



[View online »](#)

## Product images:



Western blot analysis of NF-KB p105/p50 in Raji, rat spleen, 3T3 lysates using NF-KB p105 antibody.