

Product datasheet for **TA384857S**

NFATC1 Rabbit Monoclonal Antibody [Clone ID: R03-6I1]

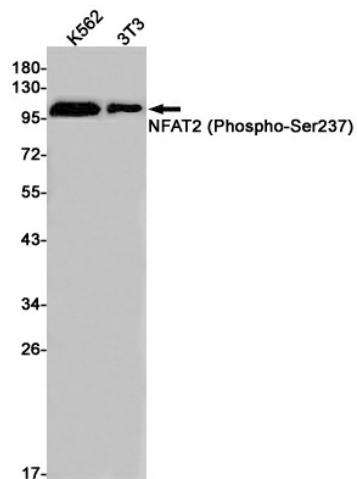
Product data:

Product Type:	Primary Antibodies
Clone Name:	R03-6I1
Applications:	WB
Recommended Dilution:	WB: 1/1000
Reactivity:	Human, Mouse
Host:	Rabbit
Isotype:	IgG
Clonality:	Monoclonal
Immunogen:	A synthetic phosphopeptide corresponding to residues surrounding Ser237 of human NFAT2 (Phosphorylated)
Formulation:	50mM Tris-Glycine(pH 7.4), 0.15M NaCl, 40% Glycerol, 0.01% Sodium azide and 0.05% BSA
Concentration:	lot specific
Purification:	Affinity Purified
Conjugation:	Unconjugated
Storage:	Store at 4°C short term. Aliquot and store at -20°C long term. Avoid freeze/thaw cycles.
Stability:	1 year
Predicted Protein Size:	Calculated MW: 101 kDa; Observed MW: 101 kDa
Database Link:	O95644
Background:	Swiss-Prot Acc.O95644.Plays a role in the inducible expression of cytokine genes in T-cells, especially in the induction of the IL-2 or IL-4 gene transcription. Also controls gene expression in embryonic cardiac cells. Could regulate not only the activation and proliferation but also the differentiation and programmed death of T-lymphocytes as well as lymphoid and non-lymphoid cells (PubMed:10358178). Required for osteoclastogenesis and regulates many genes important for osteoclast differentiation and function .



[View online »](#)

Product images:



Western blot analysis of NFAT2 (Phospho-Ser237) in K562, 3T3 lysates using Phospho-NFAT2 (Ser237) antibody.