

## Product datasheet for **TA384854**

### NF2 Rabbit Polyclonal Antibody

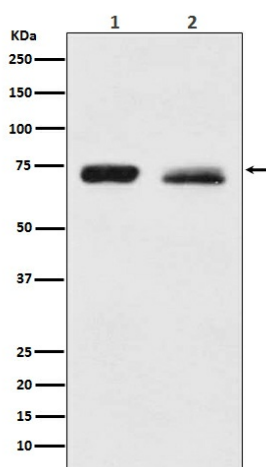
#### Product data:

Product Type:	Primary Antibodies
Applications:	IP, WB
Recommended Dilution:	WB: 1/1000-1/5000 IP: 1/50
Reactivity:	Human, Mouse, Rat
Host:	Rabbit
Isotype:	IgG
Clonality:	Polyclonal
Immunogen:	A synthesized peptide derived from human NF2 / Merlin
Formulation:	Rabbit IgG in phosphate buffered saline , pH 7.4, 150mM NaCl, 0.02% sodium azide and 50% glycerol.
Concentration:	lot specific
Purification:	Affinity Chromatography
Conjugation:	Unconjugated
Storage:	Store at 4°C short term. Aliquot and store at -20°C long term. Avoid freeze/thaw cycles.
Stability:	1 year
Predicted Protein Size:	70kDa
Gene Name:	neurofibromin 2 (merlin)
Database Link:	<a href="#">Entrez Gene 4771 Human P35240</a>
Background:	Swiss-Prot Acc.P35240.Probable regulator of the Hippo/SWH (Sav/Wts/Hpo) signaling pathway, a signaling pathway that plays a pivotal role in tumor suppression by restricting proliferation and promoting apoptosis.
Synonyms:	ACN; BANF; merlin; Neurofibromin-2; SCH; schwannomerlin; Schwannomin



[View online »](#)

## Product images:



Western blot analysis of NF2 / Merlin in (1) HeLa lysates; (2) PC-3 lysates using NF2 antibody.