

## Product datasheet for **TA384853S**

### NELFE Rabbit Monoclonal Antibody [Clone ID: R02-7E5]

#### Product data:

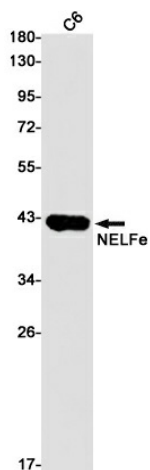
Product Type:	Primary Antibodies
Clone Name:	R02-7E5
Applications:	IHC, IP, WB
Recommended Dilution:	WB: 1/1000 IHC: 1/20 IP: 1/20
Reactivity:	Human, Mouse, Rat
Host:	Rabbit
Isotype:	IgG
Clonality:	Monoclonal
Immunogen:	Recombinant protein of human NELFe
Formulation:	50mM Tris-Glycine(pH 7.4), 0.15M NaCl, 40% Glycerol, 0.01% Sodium azide and 0.05% BSA
Concentration:	lot specific
Purification:	Affinity Purified
Conjugation:	Unconjugated
Storage:	Store at 4°C short term. Aliquot and store at -20°C long term. Avoid freeze/thaw cycles.
Stability:	1 year
Predicted Protein Size:	Calculated MW: 43 kDa; Observed MW: 43 kDa
Gene Name:	negative elongation factor complex member E
Database Link:	<a href="#">Entrez Gene 7936 Human P18615</a>
Background:	Swiss-Prot Acc.P18615.Essential component of the NELF complex, a complex that negatively regulates the elongation of transcription by RNA polymerase II. The NELF complex, which acts via an association with the DSIF complex and causes transcriptional pausing, is counteracted by the P-TEFb kinase complex. The NELF complex is involved in HIV-1 latency possibly involving recruitment of PCF11 to paused RNA polymerase II. Provides the strongest RNA binding activity of the NELF complex and may initially recruit the NELF complex to RNA. Binds to the HIV-1 TAR RNA which is located in the long terminal repeat (LTR) of HIV-1.



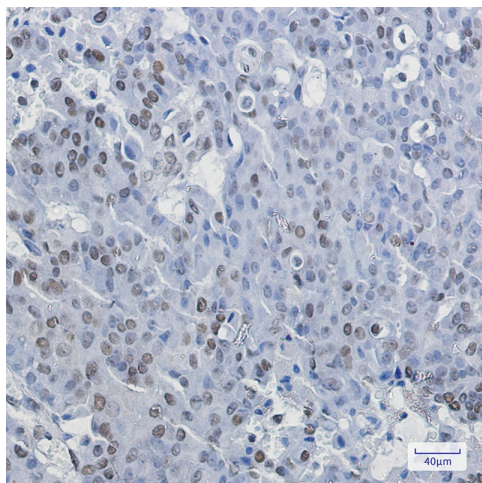
[View online »](#)

Synonyms: D6S45; NELF-E; RD; RDBP; RDP

## Product images:



Western blot analysis of NELFe in C6 lysates using NELFE antibody.



Immunohistochemistry analysis of paraffin-embedded Human breast cancer using NELFe antibody. High-pressure and temperature Sodium Citrate pH 6.0 was used for antigen retrieval.