

Product datasheet for **TA384852**

NEK9 Rabbit Monoclonal Antibody [Clone ID: R03-1F1]

Product data:

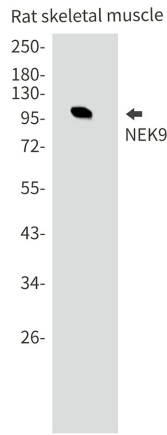
| | |
|-------------------------|---|
| Product Type: | Primary Antibodies |
| Clone Name: | R03-1F1 |
| Applications: | IF, IHC, WB |
| Recommended Dilution: | WB: 1/2000 IHC: 1/20 ICC/IF: 1/50 |
| Reactivity: | Human, Rat |
| Host: | Rabbit |
| Isotype: | IgG |
| Clonality: | Monoclonal |
| Immunogen: | A synthetic peptide of human NEK9 |
| Formulation: | 50mM Tris-Glycine(pH 7.4), 0.15M NaCl, 40% Glycerol, 0.01% Sodium azide and 0.05% BSA |
| Concentration: | lot specific |
| Purification: | Affinity Purified |
| Conjugation: | Unconjugated |
| Storage: | Store at 4°C short term. Aliquot and store at -20°C long term. Avoid freeze/thaw cycles. |
| Stability: | 1 year |
| Predicted Protein Size: | Calculated MW: 107 kDa; Observed MW: 107 kDa |
| Gene Name: | NIMA related kinase 9 |
| Database Link: | Entrez Gene 91754 Human Q8TD19 |
| Background: | Swiss-Prot Acc.Q8TD19.Pleiotropic regulator of mitotic progression, participating in the control of spindle dynamics and chromosome separation. Phosphorylates different histones, myelin basic protein, beta-casein, and BICD2. Phosphorylates histone H3 on serine and threonine residues and beta-casein on serine residues. Important for G1/S transition and S phase progression. Phosphorylates NEK6 and NEK7 and stimulates their activity by releasing the autoinhibitory functions of Tyr-108 and Tyr-97 respectively. |



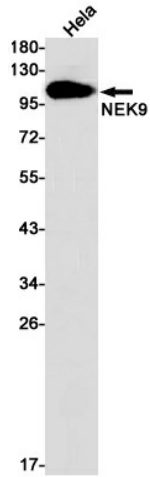
[View online »](#)

Synonyms: DKFZp434D0935; KIAA1995; MGC16714; MGC138306; Nek8; NERCC; NERCC1

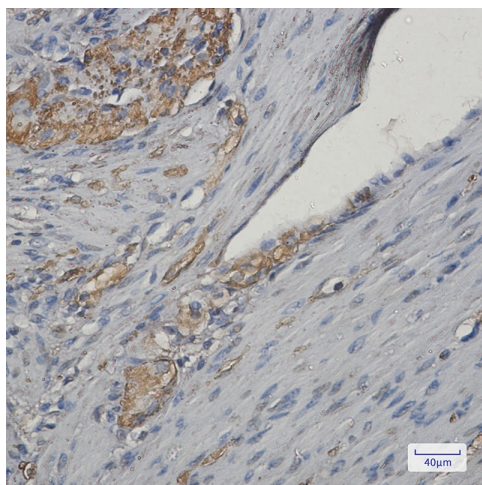
Product images:



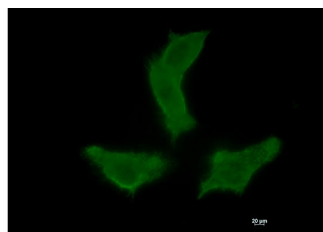
Western blot analysis of NEK9 in rat skeletal muscle lysates using NEK9 antibody.



Western blot analysis of NEK9 in HeLa lysates using NEK9 antibody



Immunohistochemistry analysis of paraffin-embedded Human colon cancer using NEK9 antibody. High-pressure and temperature Sodium Citrate pH 6.0 was used for antigen retrieval.



Immunocytochemistry analysis of NEK9 (green) in HT-1080 using NEK9 antibody, and DAPI (blue).

