

## Product datasheet for **TA384851**

### Neurofilament (NEFM) Rabbit Polyclonal Antibody

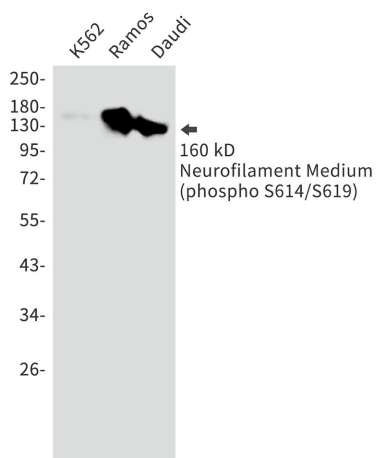
#### Product data:

Product Type:	Primary Antibodies
Applications:	IHC, WB
Recommended Dilution:	WB: 1/1000 IHC: 1/50
Reactivity:	Human
Host:	Rabbit
Isotype:	IgG
Clonality:	Polyclonal
Immunogen:	A synthetic phosphopeptide corresponding to residues surrounding Ser614/Ser619 of human 160 kD Neurofilament Medium (Phosphorylated)
Formulation:	50mM Tris-Glycine(pH 7.4), 0.15M NaCl, 40% Glycerol, 0.01% Sodium azide and 0.05% BSA
Concentration:	lot specific
Purification:	Affinity Purified
Conjugation:	Unconjugated
Storage:	Store at 4°C short term. Aliquot and store at -20°C long term. Avoid freeze/thaw cycles.
Stability:	1 year
Predicted Protein Size:	Calculated MW: 103 kDa; Observed MW: 160 kDa
Gene Name:	neurofilament, medium polypeptide
Database Link:	<a href="#">Entrez Gene 4741 Human P07197</a>
Background:	Swiss-Prot Acc.P07197.
Synonyms:	NEF3; NF-M; NFM



[View online »](#)

## Product images:



Western blot analysis of Phospho-Neurofilament Medium (Ser614/619) in K562, Ramos, Daudi lysates using Phospho-Neurofilament Medium (Ser614/Ser619) antibody.