

Product datasheet for **TA384850**

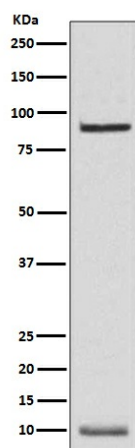
NEDD8 Rabbit Polyclonal Antibody

Product data:

Product Type:	Primary Antibodies
Applications:	IF, IHC, IP, WB
Recommended Dilution:	WB: 1/500-1/2000 IHC: 1/50-1/200 ICC/IF: 1/50-1/200 IP: 1/20
Reactivity:	Human, Mouse, Rat
Host:	Rabbit
Isotype:	IgG
Clonality:	Polyclonal
Immunogen:	A synthesized peptide derived from human NEDD8
Formulation:	Rabbit IgG in phosphate buffered saline , pH 7.4, 150mM NaCl, 0.02% sodium azide and 50% glycerol.
Concentration:	lot specific
Purification:	Affinity Chromatography
Conjugation:	Unconjugated
Storage:	Store at 4°C short term. Aliquot and store at -20°C long term. Avoid freeze/thaw cycles.
Stability:	1 year
Predicted Protein Size:	10,90kDa
Gene Name:	neural precursor cell expressed, developmentally down-regulated 8
Database Link:	Entrez Gene 4738 Human Q15843
Background:	Swiss-Prot Acc.Q15843.Neural precursor cell-expressed developmentally downregulated protein 8 (NEDD8), also known as Rub1 (related to ubiquitin 1) in plants and yeast, is a member of the ubiquitin-like protein family. The covalent attachment of NEDD8 to target proteins, termed neddylation, is a reversible, multi-step process analogous to ubiquitination.
Synonyms:	APPBP1; FLJ43224; MGC104393; MGC125896; MGC125897; NAE1; Nedd-8; Neddylin



[View online »](#)

Product images:

Western blot analysis of NEDD8 in K562 lysates using NEDD8 antibody.