

Product datasheet for **TA384849S**

NDUFS8 Rabbit Monoclonal Antibody [Clone ID: R09-2B2]

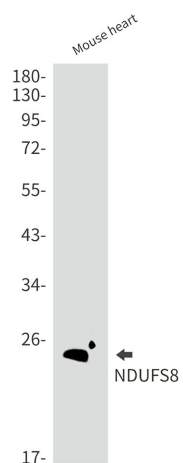
Product data:

Product Type:	Primary Antibodies
Clone Name:	R09-2B2
Applications:	WB
Recommended Dilution:	WB: 1/1000
Reactivity:	Mouse, Rat
Host:	Rabbit
Isotype:	IgG
Clonality:	Monoclonal
Immunogen:	A synthetic peptide of human NDUFS8
Formulation:	50mM Tris-Glycine(pH 7.4), 0.15M NaCl, 40% Glycerol, 0.01% Sodium azide and 0.05% BSA
Concentration:	lot specific
Purification:	Affinity Purified
Conjugation:	Unconjugated
Storage:	Store at 4°C short term. Aliquot and store at -20°C long term. Avoid freeze/thaw cycles.
Stability:	1 year
Predicted Protein Size:	Calculated MW: 24 kDa; Observed MW: 24 kDa
Gene Name:	NADH:ubiquinone oxidoreductase core subunit S8
Database Link:	O00217
Background:	Swiss-Prot Acc.O00217.Core subunit of the mitochondrial membrane respiratory chain NADH dehydrogenase (Complex I) that is believed to belong to the minimal assembly required for catalysis. Complex I functions in the transfer of electrons from NADH to the respiratory chain. The immediate electron acceptor for the enzyme is believed to be ubiquinone . May donate electrons to ubiquinone.
Synonyms:	CI-23kD; CI23KD; TYKY

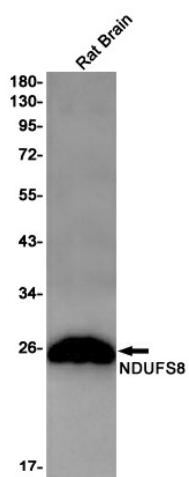


[View online »](#)

Product images:



Western blot analysis of NDUFS8 in mouse heart lysates using NDUFS8 antibody.



Western blot analysis of NDUFS8 in rat Brain lysates using NDUFS8 antibody.