

Product datasheet for **TA384848S**

NDUFS6 Rabbit Monoclonal Antibody [Clone ID: R07-6A6]

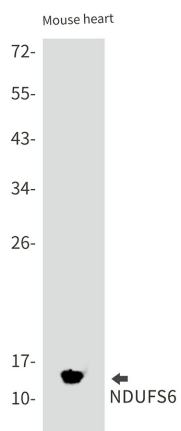
Product data:

Product Type:	Primary Antibodies
Clone Name:	R07-6A6
Applications:	IHC, WB
Recommended Dilution:	WB: 1/1000 IHC: 1/50
Reactivity:	Human, Mouse
Host:	Rabbit
Isotype:	IgG
Clonality:	Monoclonal
Immunogen:	Recombinant protein of human NDUFS6
Formulation:	50mM Tris-Glycine(pH 7.4), 0.15M NaCl, 40% Glycerol, 0.01% Sodium azide and 0.05% BSA
Concentration:	lot specific
Purification:	Affinity Purified
Conjugation:	Unconjugated
Storage:	Store at 4°C short term. Aliquot and store at -20°C long term. Avoid freeze/thaw cycles.
Stability:	1 year
Predicted Protein Size:	Calculated MW: 14 kDa; Observed MW: 14 kDa
Gene Name:	NADH:ubiquinone oxidoreductase subunit S6
Database Link:	Entrez Gene 4726 Human O75380
Background:	Swiss-Prot Acc.O75380.Accessory subunit of the mitochondrial membrane respiratory chain NADH dehydrogenase (Complex I), that is believed not to be involved in catalysis. Complex I functions in the transfer of electrons from NADH to the respiratory chain. The immediate electron acceptor for the enzyme is believed to be ubiquinone.
Synonyms:	CI-13kD-A; CI13KDA

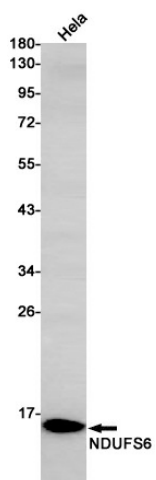


[View online »](#)

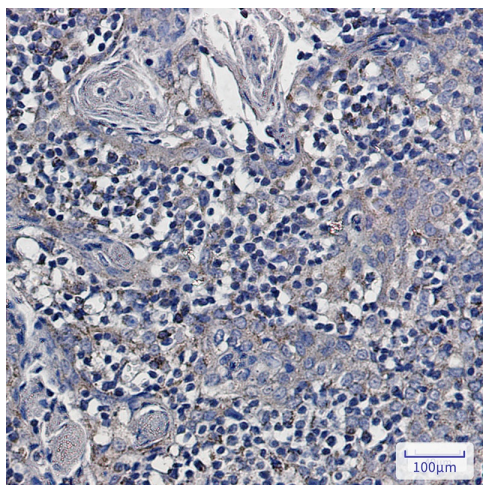
Product images:



Western blot analysis of NDUFS6 in mouse heart lysates using NDUFS6 antibody.



Western blot analysis of NDUFS6 in HeLa lysates using NDUFS6 antibody.



Immunohistochemistry analysis of paraffin-embedded Human tonsil using NDUFS6 antibody. High-pressure and temperature Sodium Citrate pH 6.0 was used for antigen retrieval.