

## Product datasheet for **TA384847**

### NDUFS6 Rabbit Monoclonal Antibody [Clone ID: R08-9E1]

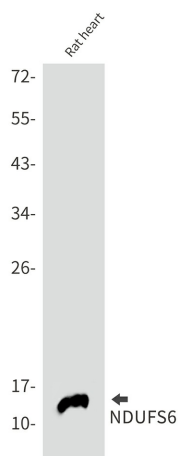
#### Product data:

Product Type:	Primary Antibodies
Clone Name:	R08-9E1
Applications:	IP, WB
Recommended Dilution:	WB: 1/1000 IP: 1/200
Reactivity:	Human, Mouse, Rat, Hamster
Host:	Rabbit
Isotype:	IgG
Clonality:	Monoclonal
Immunogen:	Recombinant protein of human NDUFS6
Formulation:	50mM Tris-Glycine(pH 7.4), 0.15M NaCl, 40% Glycerol, 0.01% Sodium azide and 0.05% BSA
Concentration:	lot specific
Purification:	Affinity Purified
Conjugation:	Unconjugated
Storage:	Store at 4°C short term. Aliquot and store at -20°C long term. Avoid freeze/thaw cycles.
Stability:	1 year
Predicted Protein Size:	Calculated MW: 14 kDa; Observed MW: 14 kDa
Gene Name:	NADH:ubiquinone oxidoreductase subunit S6
Database Link:	<a href="#">Entrez Gene 4726 Human O75380</a>
Background:	Swiss-Prot Acc.O75380.Accessory subunit of the mitochondrial membrane respiratory chain NADH dehydrogenase (Complex I), that is believed not to be involved in catalysis. Complex I functions in the transfer of electrons from NADH to the respiratory chain. The immediate electron acceptor for the enzyme is believed to be ubiquinone.
Synonyms:	CI-13kD-A; CI13KDA

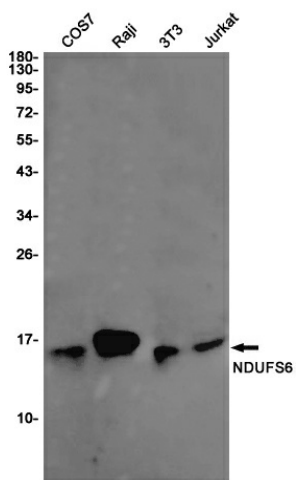


[View online »](#)

## Product images:



Western blot analysis of NDUFS6 in rat heart lysates using NDUFS6 antibody.



Western blot analysis of NDUFS6 in COS7, Raji, 3T3, Jurkat lysates using NDUFS6 antibody.