

Product datasheet for **TA384845S**

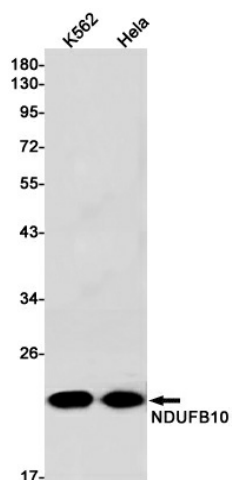
NDUFB10 Rabbit Monoclonal Antibody [Clone ID: R08-5I1]

Product data:

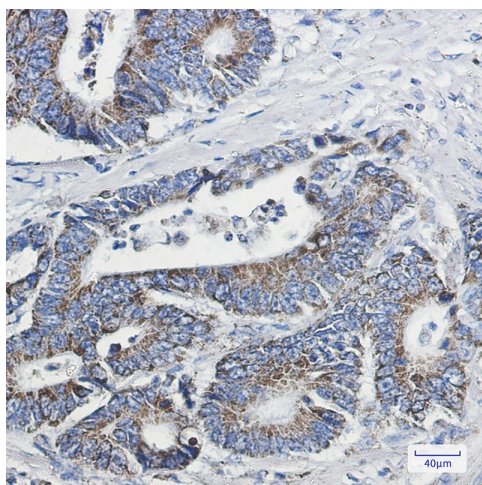
Product Type:	Primary Antibodies
Clone Name:	R08-5I1
Applications:	IF, IHC, IP, WB
Recommended Dilution:	WB: 1/2000 IHC: 1/50 ICC/IF: 1/50 IP: 1/20
Reactivity:	Human
Host:	Rabbit
Isotype:	IgG
Clonality:	Monoclonal
Immunogen:	Recombinant protein of human NDUFB10
Formulation:	50mM Tris-Glycine(pH 7.4), 0.15M NaCl, 40% Glycerol, 0.01% Sodium azide and 0.05% BSA
Concentration:	lot specific
Purification:	Affinity Purified
Conjugation:	Unconjugated
Storage:	Store at 4°C short term. Aliquot and store at -20°C long term. Avoid freeze/thaw cycles.
Stability:	1 year
Predicted Protein Size:	Calculated MW: 21 kDa; Observed MW: 21 kDa
Gene Name:	NADH:ubiquinone oxidoreductase subunit B10
Database Link:	Entrez Gene 4716 Human O96000
Background:	Swiss-Prot Acc.O96000.Accessory subunit of the mitochondrial membrane respiratory chain NADH dehydrogenase (Complex I), that is believed not to be involved in catalysis. Complex I functions in the transfer of electrons from NADH to the respiratory chain. The immediate electron acceptor for the enzyme is believed to be ubiquinone.
Synonyms:	CI-PDSW; PDSW



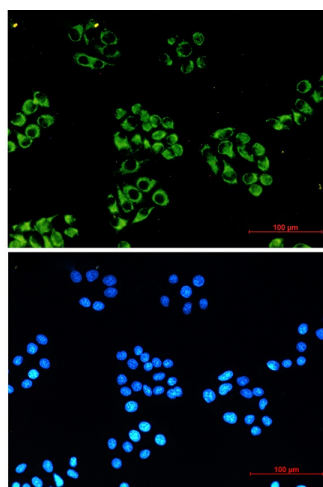
[View online »](#)

Product images:

Western blot analysis of NDUFB10 in K562, HeLa lysates using NDUFB10 antibody.



Immunohistochemistry analysis of paraffin-embedded Human colon cancer using NDUFB10 antibody. High-pressure and temperature Sodium Citrate pH 6.0 was used for antigen retrieval.



Immunocytochemistry analysis of NDUFB1 (green) in HeLa using NDUFB1 antibody, and DAPI(blue)