

Product datasheet for **TA384842**

NCOA1 Rabbit Polyclonal Antibody

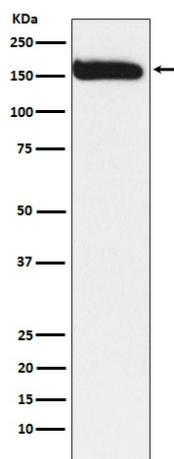
Product data:

Product Type:	Primary Antibodies
Applications:	IHC, IP, WB
Recommended Dilution:	WB: 1/500-1/2000 IHC: 1/50-1/200 IP: 1/50
Reactivity:	Human
Host:	Rabbit
Isotype:	IgG
Clonality:	Polyclonal
Immunogen:	A synthesized peptide derived from human KAT13A / SRC1
Formulation:	Rabbit IgG in phosphate buffered saline , pH 7.4, 150mM NaCl, 0.02% sodium azide and 50% glycerol.
Concentration:	lot specific
Purification:	Affinity Chromatography
Conjugation:	Unconjugated
Storage:	Store at 4°C short term. Aliquot and store at -20°C long term. Avoid freeze/thaw cycles.
Stability:	1 year
Predicted Protein Size:	157kDa
Gene Name:	nuclear receptor coactivator 1
Database Link:	Entrez Gene 8648 Human Q15788
Background:	Swiss-Prot Acc.Q15788.Nuclear receptor coactivator that directly binds nuclear receptors and stimulates the transcriptional activities in a hormone-dependent fashion. Involved in the coactivation of different nuclear receptors, such as for steroids (PGR, GR and ER), retinoids (RXRs), thyroid hormone (TRs) and prostanoids (PPARs).
Synonyms:	bHLHe42; bHLHe74; F-SRC-1; KAT13A; MGC129719; MGC129720; NCoA-1; OTTHUMP00000155181; OTTHUMP00000155182; RIP160; SRC-1; SRC1



[View online »](#)

Product images:



Western blot analysis of KAT13A / SRC1 in HEK293 lysates using KAT13A antibody.