

Product datasheet for **TA384838**

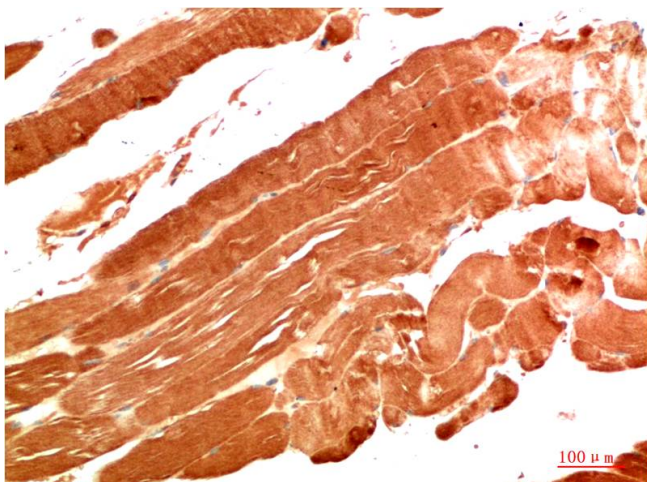
NBR1 Mouse Monoclonal Antibody [Clone ID: 7H2-4B2-6D6]

Product data:

Product Type:	Primary Antibodies
Clone Name:	7H2-4B2-6D6
Applications:	IHC
Recommended Dilution:	IHC: 1/100-200
Reactivity:	Human, Rat, Mouse
Host:	Mouse
Isotype:	IgG1
Clonality:	Monoclonal
Immunogen:	Purified recombinant protein expressed in E.coli.
Formulation:	Liquid in PBS containing 50% glycerol, 0.5% BSA and 0.03% Proclin 300, pH 7.3.
Concentration:	lot specific
Purification:	Affinity Purified
Conjugation:	Unconjugated
Storage:	Store at 4°C short term. Aliquot and store at -20°C long term. Avoid freeze/thaw cycles.
Stability:	1 year
Predicted Protein Size:	120kDa
Gene Name:	NBR1, autophagy cargo receptor
Database Link:	Entrez Gene 4077 Human Q14596
Background:	Swiss-Prot Acc.Q14596.Acts probably as a receptor for selective autophagosomal degradation of ubiquitinated targets.
Synonyms:	1A1-3B; 1A13B; CA125; FLJ55359; FLJ98272; KIAA0049; M17S2; MIG19



[View online »](#)

Product images:

Immunohistochemistry analysis of paraffin-embedded Human Skeletal Muscle Tissue using NBR1 (7H2) antibody. High-pressure and temperature Sodium Citrate pH 6.0 was used for antigen retrieval.