

## Product datasheet for **TA384836S**

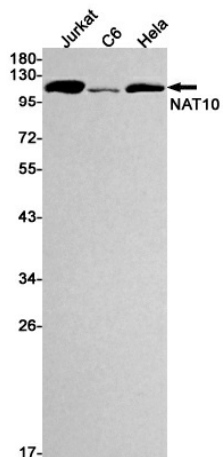
### **NAT10 Rabbit Monoclonal Antibody [Clone ID: R05-1C8]**

#### **Product data:**

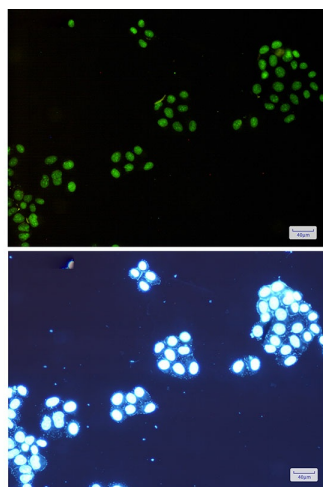
Product Type:	Primary Antibodies
Clone Name:	R05-1C8
Applications:	IF, IP, WB
Recommended Dilution:	WB: 1/1000 ICC/IF: 1/200 IP: 1/20
Reactivity:	Human, Rat
Host:	Rabbit
Isotype:	IgG
Clonality:	Monoclonal
Immunogen:	Recombinant protein of human NAT10
Formulation:	50mM Tris-Glycine(pH 7.4), 0.15M NaCl, 40% Glycerol, 0.01% Sodium azide and 0.05% BSA
Concentration:	lot specific
Purification:	Affinity Purified
Conjugation:	Unconjugated
Storage:	Store at 4°C short term. Aliquot and store at -20°C long term. Avoid freeze/thaw cycles.
Stability:	1 year
Predicted Protein Size:	Calculated MW: 116 kDa; Observed MW: 116 kDa
Gene Name:	N-acetyltransferase 10
Database Link:	<a href="#">Entrez Gene 55226 Human Q9H0A0</a>
Background:	Swiss-Prot Acc.Q9H0A0.
Synonyms:	ALP; DKFZp434C116; FLJ10774; FLJ12179; FLJ23850; hALP; KIAA1709; NET43



[View online »](#)

**Product images:**

Western blot analysis of NAT10 in Jurkat, C6, HeLa lysates using NAT10 antibody.



Immunocytochemistry analysis of NAT10(green) in HeLa using NAT10 antibody, and DAPI(blue)