

## Product datasheet for **TA384833M**

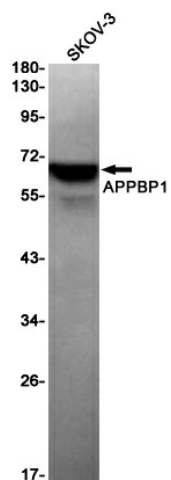
### APPBP1 (NAE1) Rabbit Monoclonal Antibody [Clone ID: R03-1A7]

#### Product data:

Product Type:	Primary Antibodies
Clone Name:	R03-1A7
Applications:	IP, WB
Recommended Dilution:	WB: 1/1000-1/2000 IP: 1/20
Reactivity:	Human
Host:	Rabbit
Isotype:	IgG
Clonality:	Monoclonal
Immunogen:	A synthetic peptide of human APPBP1
Formulation:	50mM Tris-Glycine(pH 7.4), 0.15M NaCl, 40% Glycerol, 0.01% Sodium azide and 0.05% BSA
Concentration:	lot specific
Purification:	Affinity Purified
Conjugation:	Unconjugated
Storage:	Store at 4°C short term. Aliquot and store at -20°C long term. Avoid freeze/thaw cycles.
Stability:	1 year
Predicted Protein Size:	Calculated MW: 60 kDa; Observed MW: 60 kDa
Gene Name:	NEDD8 activating enzyme E1 subunit 1
Database Link:	<a href="#">Entrez Gene 8883 Human Q13564</a>
Background:	Swiss-Prot Acc.Q13564.Regulatory subunit of the dimeric UBA3-NAE1 E1 enzyme. E1 activates NEDD8 by first adenylating its C-terminal glycine residue with ATP, thereafter linking this residue to the side chain of the catalytic cysteine, yielding a NEDD8-UBA3 thioester and free AMP. E1 finally transfers NEDD8 to the catalytic cysteine of UBE2M. Necessary for cell cycle progression through the S-M checkpoint. Overexpression of NAE1 causes apoptosis through deregulation of NEDD8 conjugation.
Synonyms:	A-116A10.1; APP-BP1; APPBP1; HPP1; ula-1



[View online »](#)

**Product images:**

Western blot analysis of APPBP1 in SKOV-3 lysates using APPBP1 antibody.