

## Product datasheet for **TA384830S**

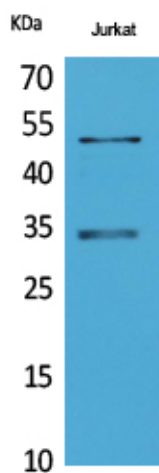
### MYOD1 Rabbit Polyclonal Antibody

#### Product data:

Product Type:	Primary Antibodies
Applications:	ELISA, WB
Recommended Dilution:	WB: 1/500-1/2000 ELISA: 1/20000
Reactivity:	Human, Mouse, Rat, Chicken
Host:	Rabbit
Isotype:	IgG
Clonality:	Polyclonal
Immunogen:	The antiserum was produced against synthesized peptide derived from human MyoD around the non-acetylation site of Lys99/102. AA range:61-110
Formulation:	Liquid in PBS containing 50% glycerol, 0.5% BSA and 0.02% sodium azide, pH 7.3.
Concentration:	lot specific
Purification:	Affinity Purified
Conjugation:	Unconjugated
Storage:	Store at 4°C short term. Aliquot and store at -20°C long term. Avoid freeze/thaw cycles.
Stability:	1 year
Predicted Protein Size:	Observed MW (kDa):35
Gene Name:	myogenic differentiation 1
Database Link:	<a href="#">Entrez Gene 4654 Human P15172</a>
Background:	Swiss-Prot Acc.P15172.
Synonyms:	bHLHc1; Myf-3; MYF3; MYOD; PUM



[View online »](#)

**Product images:**

Western blot analysis of Myoblast Determination Protein 1 in Jurkat lysates using Myoblast Determination Protein 1 antibody.