

Product datasheet for **TA384830M**

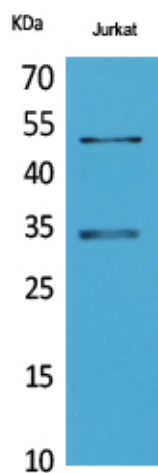
MYOD1 Rabbit Polyclonal Antibody

Product data:

| | |
|-------------------------|--|
| Product Type: | Primary Antibodies |
| Applications: | ELISA, WB |
| Recommended Dilution: | WB: 1/500-1/2000 ELISA: 1/20000 |
| Reactivity: | Human, Mouse, Rat, Chicken |
| Host: | Rabbit |
| Isotype: | IgG |
| Clonality: | Polyclonal |
| Immunogen: | The antiserum was produced against synthesized peptide derived from human MyoD around the non-acetylation site of Lys99/102. AA range:61-110 |
| Formulation: | Liquid in PBS containing 50% glycerol, 0.5% BSA and 0.02% sodium azide, pH 7.3. |
| Concentration: | lot specific |
| Purification: | Affinity Purified |
| Conjugation: | Unconjugated |
| Storage: | Store at 4°C short term. Aliquot and store at -20°C long term. Avoid freeze/thaw cycles. |
| Stability: | 1 year |
| Predicted Protein Size: | Observed MW (kDa):35 |
| Gene Name: | myogenic differentiation 1 |
| Database Link: | Entrez Gene 4654 Human P15172 |
| Background: | Swiss-Prot Acc.P15172. |
| Synonyms: | bHLHc1; Myf-3; MYF3; MYOD; PUM |



[View online »](#)

Product images:

Western blot analysis of Myoblast Determination Protein 1 in Jurkat lysates using Myoblast Determination Protein 1 antibody.