

## Product datasheet for **TA384829**

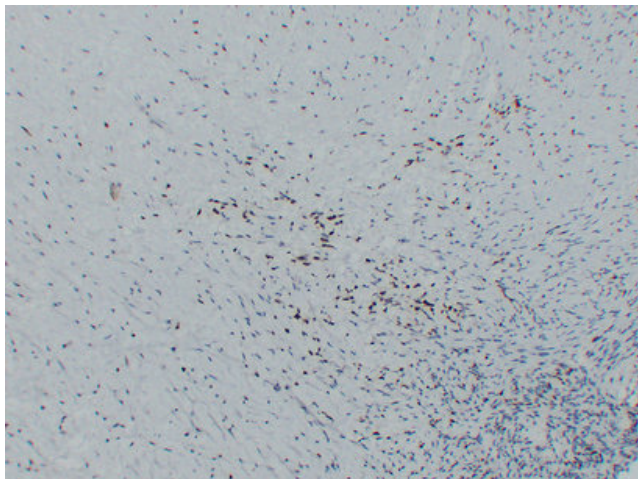
### MYOD1 Mouse Monoclonal Antibody [Clone ID: 3A10-1C10-10D5]

#### Product data:

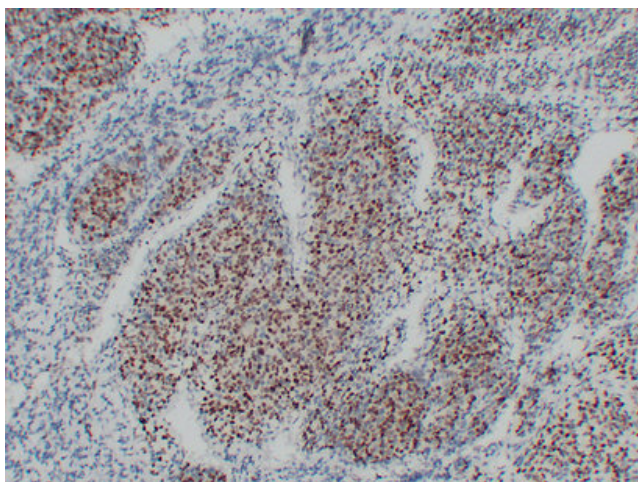
Product Type:	Primary Antibodies
Clone Name:	3A10-1C10-10D5
Applications:	IF, IHC
Recommended Dilution:	IHC-p: 1/100-1/500 IF: 1/500-1/200
Reactivity:	Human
Host:	Mouse
Isotype:	IgG2a, kappa
Clonality:	Monoclonal
Immunogen:	Synthesized peptide derived from human MyoD1
Formulation:	Liquid in PBS containing 50% glycerol, 0.5% BSA and 0.02% sodium azide, pH 7.3.
Concentration:	lot specific
Purification:	Affinity Chromatography
Conjugation:	Unconjugated
Storage:	Store at 4°C short term. Aliquot and store at -20°C long term. Avoid freeze/thaw cycles.
Stability:	1 year
Gene Name:	myogenic differentiation 1
Database Link:	<a href="#">Entrez Gene 4654 Human P15172</a>
Background:	Swiss-Prot Acc.P15172.
Synonyms:	bHLHc1; Myf-3; MYF3; MYOD; PUM



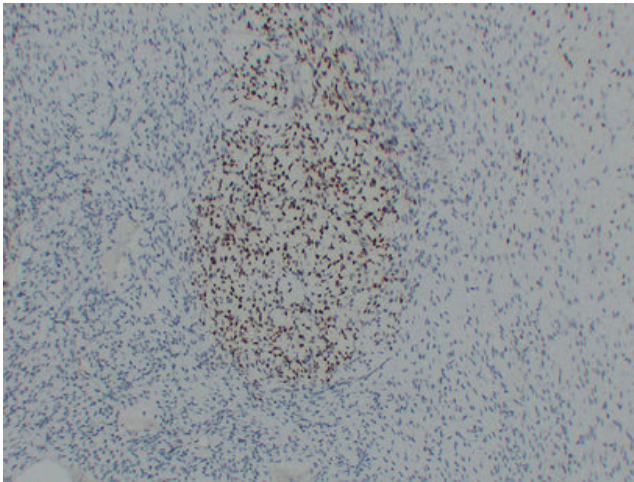
[View online »](#)

**Product images:**

Immunohistochemical analysis of paraffin-embedded Rhabdomyosarcoma. 1, Antibody was diluted at 1:200(4°,overnight). 2, Citrate buffer of pH6.0 was used for antigen retrieval. 3,Secondary antibody was diluted at 1:200(room temperature, 30min).



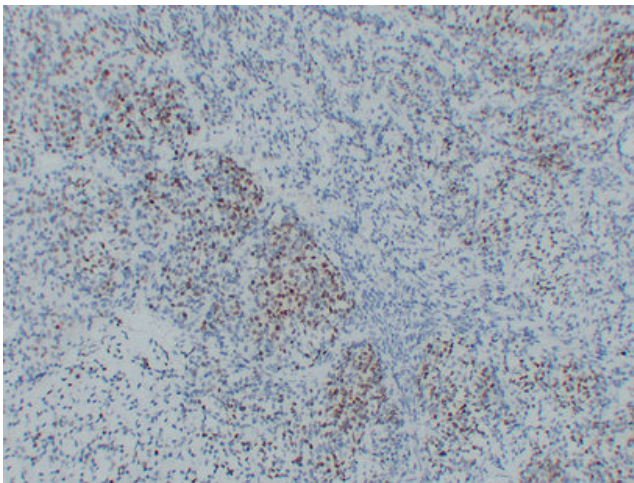
Immunohistochemical analysis of paraffin-embedded Rhabdomyosarcoma. 1, Antibody was diluted at 1:200(4°,overnight). 2, Citrate buffer of pH6.0 was used for antigen retrieval. 3,Secondary antibody was diluted at 1:200(room temperature, 30min).



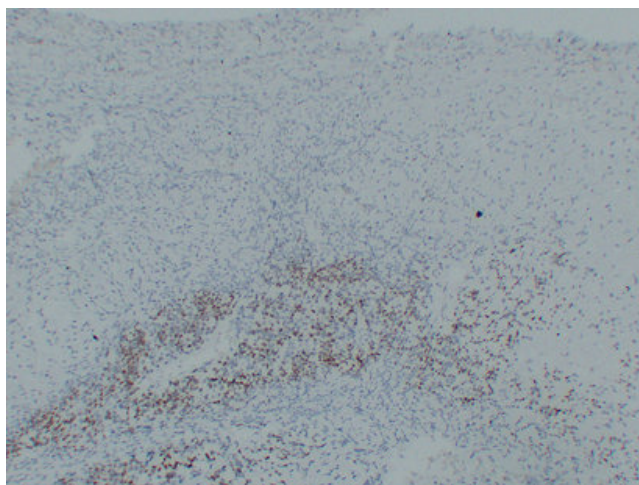
Immunohistochemical analysis of paraffin-embedded Rhabdomyosarcoma. 1, Antibody was diluted at 1:200(4°,overnight). 2, Citrate buffer of pH6. was used for antigen retrieval. 3,Secondary antibody was diluted at 1:200(room temperature, 30min).



Immunohistochemical analysis of paraffin-embedded Rhabdomyosarcoma. 1, Antibody was diluted at 1:200(4°,overnight). 2, Citrate buffer of pH6.0 was used for antigen retrieval. 3,Secondary antibody was diluted at 1:200(room temperature, 30min).



Immunohistochemical analysis of paraffin-embedded Rhabdomyosarcoma. 1, Antibody was diluted at 1:200(4°,overnight). 2, Citrate buffer of pH6.0 was used for antigen retrieval. 3,Secondary antibody was diluted at 1:200(room temperature, 30min).



Immunohistochemical analysis of paraffin-embedded Rhabdomyosarcoma. 1, Antibody was diluted at 1:200(4°,overnight). 2, Citrate buffer of pH6.0 was used for antigen retrieval. 3,Secondary antibody was diluted at 1:200(room temperature, 30min).