

Product datasheet for **TA384827**

Myosin Heavy chain 1 (MYH1) Rabbit Polyclonal Antibody

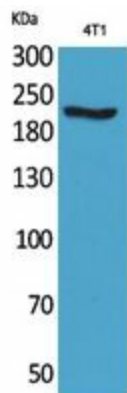
Product data:

Product Type:	Primary Antibodies
Applications:	ELISA, IHC, WB
Recommended Dilution:	WB: 1/500-1/2000 IHC-p: 1/100-1/300 ELISA: 1/20000
Reactivity:	Human, Mouse, Rat
Host:	Rabbit
Isotype:	IgG
Clonality:	Polyclonal
Immunogen:	The antiserum was produced against synthesized peptide derived from human MYH-pan around the non-acetylation site of Lys1394. AA range:1351-1400
Formulation:	Liquid in PBS containing 50% glycerol, 0.5% BSA and 0.02% sodium azide, pH 7.3.
Concentration:	lot specific
Purification:	Affinity Purified
Conjugation:	Unconjugated
Storage:	Store at 4°C short term. Aliquot and store at -20°C long term. Avoid freeze/thaw cycles.
Stability:	1 year
Predicted Protein Size:	Observed MW (kDa):225
Gene Name:	myosin, heavy chain 1, skeletal muscle, adult
Database Link:	Entrez Gene 4619 Human P12882
Background:	Swiss-Prot Acc.P12882/Q9UKX2/P11055/Q9Y623/P13533/P12883/P13535.
Synonyms:	MGC133384; MYHa; MyHC-2x; MyHC-2X/D; MyHC-IIx/d; MYHSA1

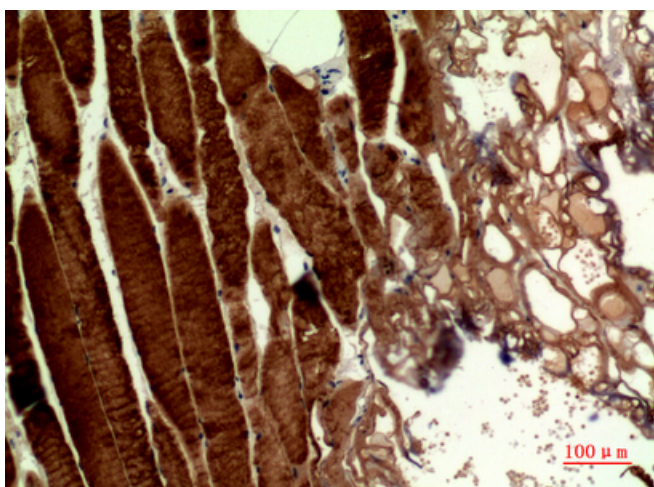


[View online »](#)

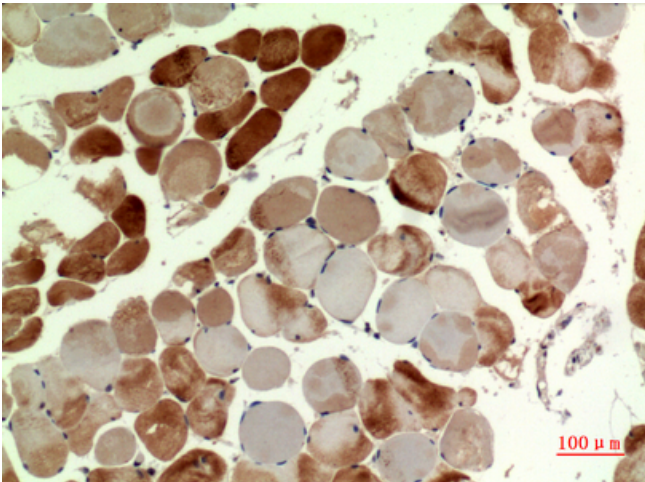
Product images:



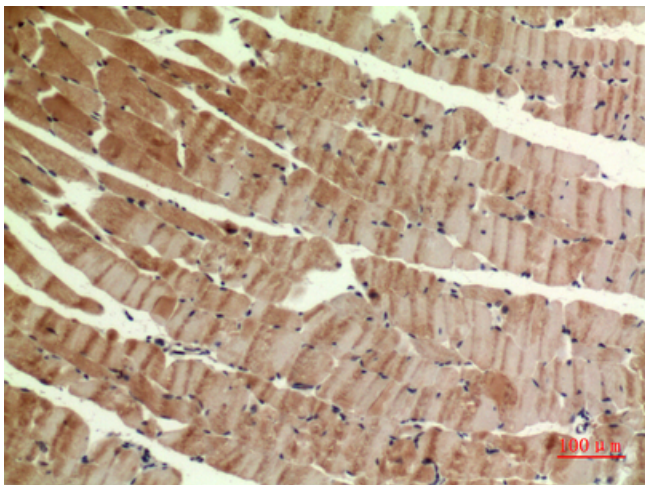
Western blot analysis of MYH pAb in 4T1 lysates using MYH antibody.



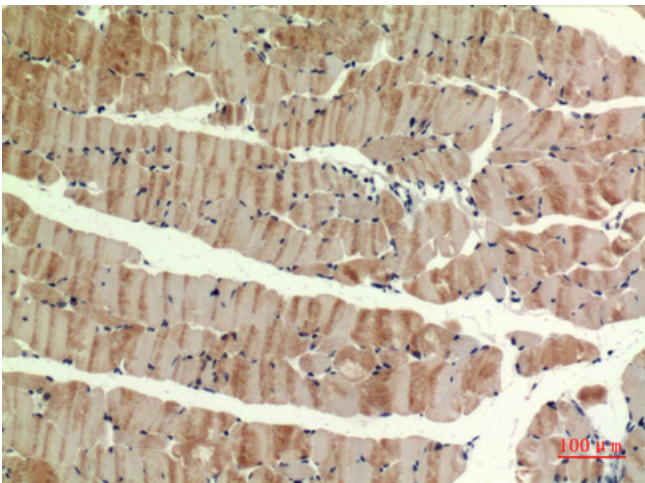
Immunohistochemistry analysis of paraffin-embedded Human muscle using MYH antibody. High-pressure and temperature Sodium Citrate pH 6.0 was used for antigen retrieval.



Immunohistochemistry analysis of paraffin-embedded Human muscle using MYH antibody. High-pressure and temperature Sodium Citrate pH 6.0 was used for antigen retrieval.



Immunohistochemistry analysis of paraffin-embedded mouse muscle using MYH antibody. High-pressure and temperature Sodium Citrate pH 6.0 was used for antigen retrieval.



Immunohistochemistry analysis of paraffin-embedded mouse muscle using MYH antibody. High-pressure and temperature Sodium Citrate pH 6.0 was used for antigen retrieval.