

Product datasheet for **TA384826**

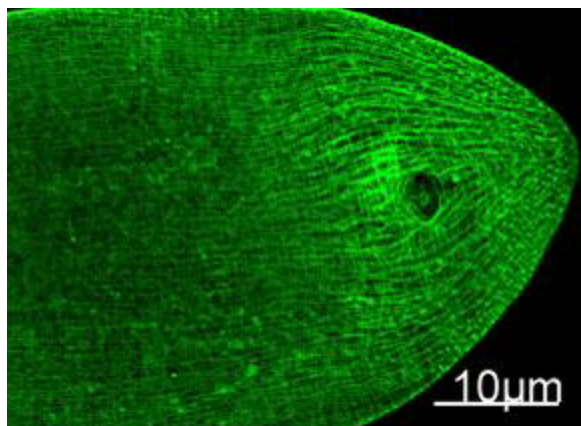
Myosin Heavy chain 1 (MYH1) Mouse Monoclonal Antibody [Clone ID: 9C7-4A6-5H10]

Product data:

Product Type:	Primary Antibodies
Clone Name:	9C7-4A6-5H10
Applications:	IF
Recommended Dilution:	IF: 1/100
Reactivity:	Human, Mouse, Rat
Host:	Mouse
Isotype:	IgG1
Clonality:	Monoclonal
Immunogen:	Synthetic Peptide of Myosin Heavy Chain
Formulation:	Liquid in PBS containing 50% glycerol, 0.5% BSA and 0.03% Proclin 300, pH 7.3.
Concentration:	lot specific
Purification:	Affinity Purified
Conjugation:	Unconjugated
Storage:	Store at 4°C short term. Aliquot and store at -20°C long term. Avoid freeze/thaw cycles.
Stability:	1 year
Predicted Protein Size:	Observed MW (kDa):220
Gene Name:	myosin, heavy chain 1, skeletal muscle, adult
Database Link:	Entrez Gene 4619 Human P12882
Background:	Swiss-Prot Acc.P12882.Muscle contraction.RegionsFeature keyPosition(s)Description
Synonyms:	MGC133384; MYHa; MyHC-2x; MyHC-2X/D; MyHC-IIx/d; MYHSA1



[View online »](#)

Product images:

Immunofluorescence analysis of MYH1 (9C7) in
Immunofluorescence Staining of nematode tissue
using MYH1 (9C7) antibody.