

Product datasheet for **TA384825**

MYD88 Rabbit Polyclonal Antibody

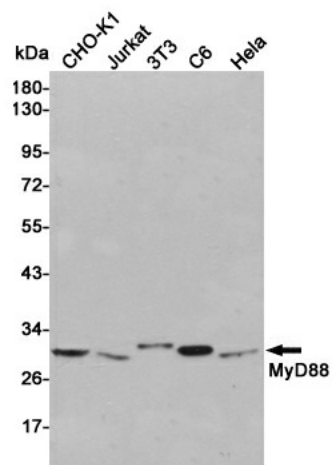
Product data:

Product Type:	Primary Antibodies
Applications:	ELISA, IF, IHC, WB
Recommended Dilution:	IF: 1/50-200 WB: 1/500-1/2000 IHC: 1/100-1/300 Immunocytochemistry: 1/200-1/1000 ELISA: 1/20000
Reactivity:	Human, Mouse, Rat
Host:	Rabbit
Isotype:	IgG
Clonality:	Polyclonal
Immunogen:	The antiserum was produced against synthesized peptide derived from human MyD88. AA range:171-220
Formulation:	Liquid in PBS containing 50% glycerol, 0.5% BSA and 0.02% sodium azide, pH 7.3.
Concentration:	lot specific
Purification:	Affinity Purified
Conjugation:	Unconjugated
Storage:	Store at 4°C short term. Aliquot and store at -20°C long term. Avoid freeze/thaw cycles.
Stability:	1 year
Predicted Protein Size:	Observed MW (kDa):33
Gene Name:	myeloid differentiation primary response 88
Database Link:	Entrez Gene 4615 Human Q99836
Background:	Swiss-Prot Acc.Q99836.
Synonyms:	MYD88D



[View online »](#)

Product images:



Western blot analysis of MyD88 in CHO-K1, Jurkat, 3T3, C6 and HeLa lysates using MyD88 antibody.