

## Product datasheet for **TA384822S**

### c-Myc (MYC) Rabbit Polyclonal Antibody

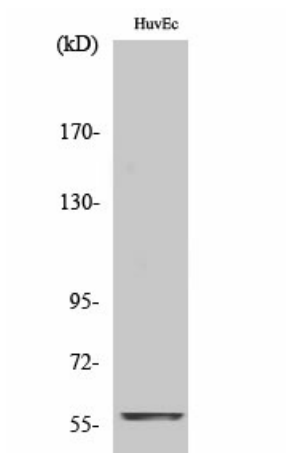
#### Product data:

Product Type:	Primary Antibodies
Applications:	ELISA, IF, IHC, WB
Recommended Dilution:	WB: 1/500-1/2000 IHC: 1/100-1/300 IF: 1/200-1/1000 ELISA: 1/40000
Reactivity:	Human, Mouse, Rat
Host:	Rabbit
Isotype:	IgG
Clonality:	Polyclonal
Immunogen:	The antiserum was produced against synthesized peptide derived from human MYC. AA range:386-435
Formulation:	Liquid in PBS containing 50% glycerol, 0.5% BSA and 0.02% sodium azide, pH 7.3.
Concentration:	lot specific
Purification:	Affinity Purified
Conjugation:	Unconjugated
Storage:	Store at 4°C short term. Aliquot and store at -20°C long term. Avoid freeze/thaw cycles.
Stability:	1 year
Predicted Protein Size:	Observed MW (kDa):50, (also -60KD in some samples)
Gene Name:	v-myc avian myelocytomatosis viral oncogene homolog
Database Link:	<a href="#">Entrez Gene 4609 Human P01106</a>
Background:	Swiss-Prot Acc.P01106.
Synonyms:	bHLHe39; c-Myc; MRTL

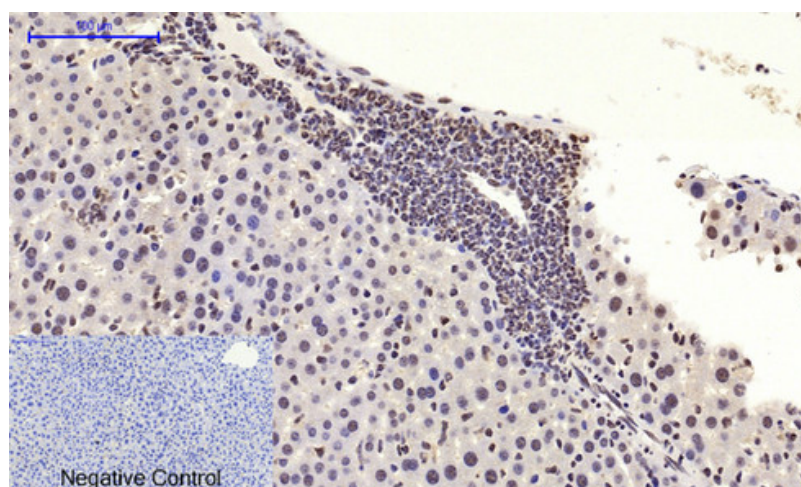


[View online »](#)

## Product images:



Western blot analysis of c-Myc in HuvEc lysates using c-Myc antibody.



Immunohistochemical analysis of paraffin-embedded mouse liver tissue using c-Myc Polyclonal Antibody diluted at 1:200