

Product datasheet for **TA384821**

c-Myb (MYB) Rabbit Polyclonal Antibody

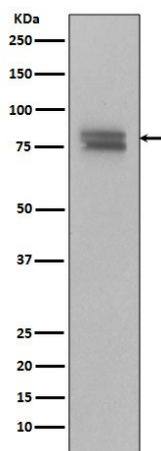
Product data:

Product Type:	Primary Antibodies
Applications:	IF, IHC, IP, WB
Recommended Dilution:	WB: 1/1000-1/2000 IHC: 1/50-1/200 ICC/IF: 1/50-1/200 IP: 1/30
Reactivity:	Human
Host:	Rabbit
Isotype:	IgG
Clonality:	Polyclonal
Immunogen:	A synthesized peptide derived from human Myb (Phosphorylated)
Formulation:	Rabbit IgG in phosphate buffered saline , pH 7.4, 150mM NaCl, 0.02% sodium azide and 50% glycerol.
Concentration:	lot specific
Purification:	Affinity Chromatography
Conjugation:	Unconjugated
Storage:	Store at 4°C short term. Aliquot and store at -20°C long term. Avoid freeze/thaw cycles.
Stability:	1 year
Predicted Protein Size:	72,80kDa
Gene Name:	MYB proto-oncogene, transcription factor
Database Link:	Entrez Gene 4602 Human P10242
Background:	Swiss-Prot Acc.P10242.Transcriptional activator; DNA-binding protein that specifically recognize the sequence 5'-YAAC[GT]G-3'. Plays an important role in the control of proliferation and differentiation of hematopoietic progenitor cells.
Synonyms:	c-myb; c-myb8B_CDS; c-myb10A_CDS; c-myb13A_CDS; c-myb14A_CDS; c-myb_CDS; Cmyb; efg



[View online »](#)

Product images:



Western blot analysis of Phospho-vMyb + c-Myb (S11) in Ramos lysates using Phospho-c Myb (Ser11) antibody.