

Product datasheet for **TA384812S**

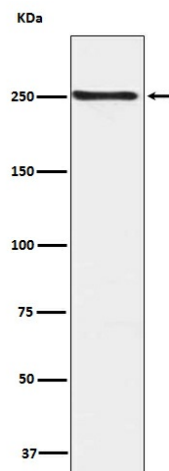
MTOR Rabbit Polyclonal Antibody

Product data:

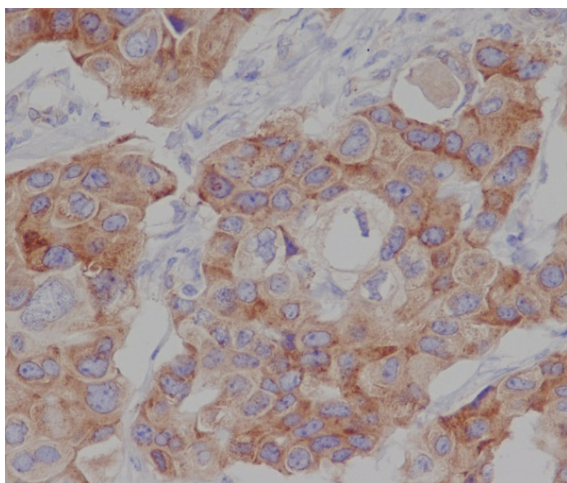
Product Type:	Primary Antibodies
Applications:	IHC, WB
Recommended Dilution:	WB: 1/500-1/1000
Reactivity:	Human, Mouse, Pig
Host:	Rabbit
Isotype:	IgG
Clonality:	Polyclonal
Immunogen:	A synthesized peptide derived from human Phospho-mTOR (S2448) (Phosphorylated)
Formulation:	Rabbit IgG in phosphate buffered saline , pH 7.4, 150mM NaCl, 0.02% sodium azide and 50% glycerol.
Concentration:	lot specific
Purification:	Affinity Chromatography
Conjugation:	Unconjugated
Storage:	Store at 4°C short term. Aliquot and store at -20°C long term. Avoid freeze/thaw cycles.
Stability:	1 year
Predicted Protein Size:	289kDa
Gene Name:	mechanistic target of rapamycin
Database Link:	Entrez Gene 2475 Human P42345
Background:	Swiss-Prot Acc.P42345.An atypical kinase belonging to the PIKK family of kinases. Controls cell growth through protein synthesis regulation. Downstream of PI3K/Akt pathway and required for cell survival. Acts as the target for the cell-cycle arrest and immunosuppressive effects of the FKBP12-rapamycin complex.
Synonyms:	FLJ44809; FRAP; FRAP1; FRAP2; KIAA1303; RAFT1; RAPT1; RAPTOR; RPTOR



[View online »](#)

Product images:

Western blot analysis of Phospho-mTOR (S2448) in HEK293 lysates using Phospho-mTOR (Ser2448) antibody.



Immunohistochemical analysis of paraffin-embedded human breast cancer, using Phospho-mTOR (S2448) Antibody.