

## Product datasheet for **TA384810S**

### **MTHFR Rabbit Monoclonal Antibody [Clone ID: R02-6H3]**

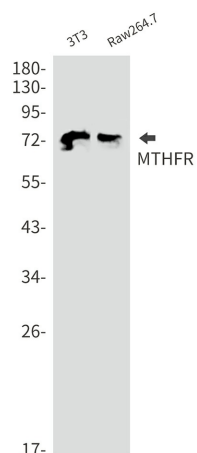
#### **Product data:**

Product Type:	Primary Antibodies
Clone Name:	R02-6H3
Applications:	IF, IP, WB
Recommended Dilution:	WB: 1/1000 ICC/IF: 1/20 IP: 1/20
Reactivity:	Human, Mouse
Host:	Rabbit
Isotype:	IgG
Clonality:	Monoclonal
Immunogen:	Recombinant protein of human MTHFR
Formulation:	50mM Tris-Glycine(pH 7.4), 0.15M NaCl, 40% Glycerol, 0.01% Sodium azide and 0.05% BSA
Concentration:	lot specific
Purification:	Affinity Purified
Conjugation:	Unconjugated
Storage:	Store at 4°C short term. Aliquot and store at -20°C long term. Avoid freeze/thaw cycles.
Stability:	1 year
Predicted Protein Size:	Calculated MW: 75 kDa; Observed MW: 75 kDa
Gene Name:	methylenetetrahydrofolate reductase (NAD(P)H)
Database Link:	<a href="#">Entrez Gene 4524 Human P42898</a>
Background:	Swiss-Prot Acc.P42898.Catalyzes the conversion of 5,10-methylenetetrahydrofolate to 5-methyltetrahydrofolate, a co-substrate for homocysteine remethylation to methionine.
Synonyms:	OTTHUMP00000002367

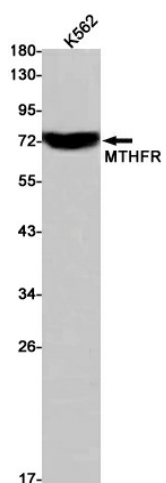


[View online »](#)

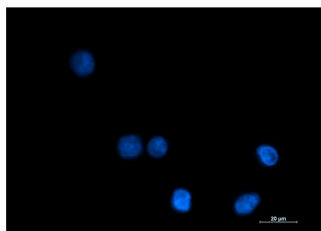
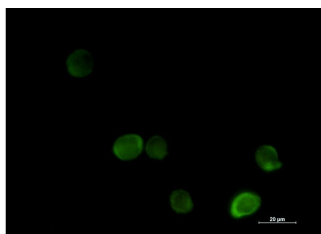
## Product images:



Western blot analysis of MTHFR in 3T3, Raw264.7 lysates using MTHFR antibody.



Western blot analysis of MTHFR in K562 lysates using MTHFR antibody



Immunocytochemistry analysis of MTHFR (green) in K562 using MTHFR antibody, and DAPI (blue).