

Product datasheet for **TA384809**

LYRIC (MTDH) Rabbit Polyclonal Antibody

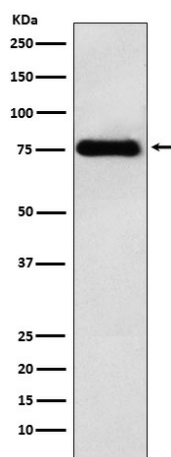
Product data:

Product Type:	Primary Antibodies
Applications:	IF, IHC, WB
Recommended Dilution:	WB: 1/1000-1/5000 IHC: 1/50-1/200 ICC/IF: 1/50-1/200
Reactivity:	Human, Mouse, Rat
Host:	Rabbit
Isotype:	IgG
Clonality:	Polyclonal
Immunogen:	A synthesized peptide derived from human LYRIC
Formulation:	Rabbit IgG in phosphate buffered saline , pH 7.4, 150mM NaCl, 0.02% sodium azide and 50% glycerol.
Concentration:	lot specific
Purification:	Affinity Chromatography
Conjugation:	Unconjugated
Storage:	Store at 4°C short term. Aliquot and store at -20°C long term. Avoid freeze/thaw cycles.
Stability:	1 year
Predicted Protein Size:	75kDa
Gene Name:	metadherin
Database Link:	Entrez Gene 92140 Human Q86UE4
Background:	Swiss-Prot Acc.Q86UE4.Downregulates SLC1A2/EAAT2 promoter activity when expressed ectopically. Activates the nuclear factor kappa-B (NF-kappa-B) transcription factor. Promotes anchorage-independent growth of immortalized melanocytes and astrocytes which is a key component in tumor cell expansion.
Synonyms:	3D3; 3D3/LYRIC; AEG-1; AEG1; LYRIC; LYRIC/3D3; metadherin



[View online »](#)

Product images:



Western blot analysis of LYRIC in HeLa lysates using LYRIC antibody.