

## Product datasheet for **TA384807**

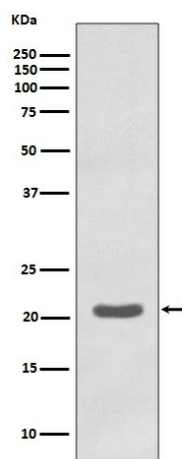
### MTCO2 (COX2) Rabbit Polyclonal Antibody

#### Product data:

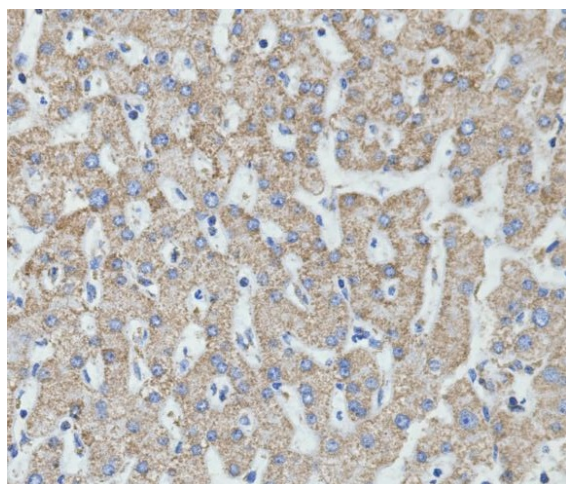
Product Type:	Primary Antibodies
Applications:	FC, IF, IHC, IP, WB
Recommended Dilution:	WB: 1/500-1/2000 IHC: 1/50-1/200 ICC/IF: 1/50-1/200 IP: 1/20 FC: 1/50
Reactivity:	Human
Host:	Rabbit
Isotype:	IgG
Clonality:	Polyclonal
Immunogen:	A synthesized peptide derived from human MTCO2
Formulation:	Rabbit IgG in phosphate buffered saline , pH 7.4, 150mM NaCl, 0.02% sodium azide and 50% glycerol.
Concentration:	lot specific
Purification:	Affinity Chromatography
Conjugation:	Unconjugated
Storage:	Store at 4°C short term. Aliquot and store at -20°C long term. Avoid freeze/thaw cycles.
Stability:	1 year
Predicted Protein Size:	21kDa
Gene Name:	mitochondrially encoded cytochrome c oxidase II
Database Link:	<a href="#">Entrez Gene 4513 Human P00403</a>
Background:	Swiss-Prot Acc.P00403.Cytochrome c oxidase is the component of the respiratory chain that catalyzes the reduction of oxygen to water. Subunits 1-3 form the functional core of the enzyme complex. Subunit 2 transfers the electrons from cytochrome c via its binuclear copper A center to the bimetallic center of the catalytic subunit 1.



[View online »](#)

**Product images:**

Western blot analysis of MTCO2 in K562 lysates using MTCO2 antibody.



Immunohistochemistry analysis of paraffin-embedded Human liver using MTCO2 antibody. High-pressure and temperature Sodium Citrate pH 6.0 was used for antigen retrieval.