

Product datasheet for **TA384805M**

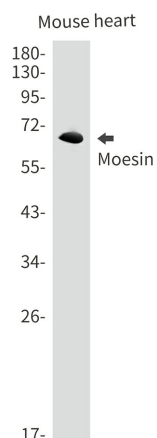
Moesin (MSN) Rabbit Monoclonal Antibody [Clone ID: R07-5E3]

Product data:

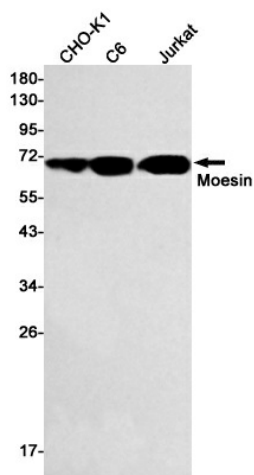
Product Type:	Primary Antibodies
Clone Name:	R07-5E3
Applications:	IHC, IP, WB
Recommended Dilution:	WB: 1/1000 IHC: 1/20 IP: 1/20
Reactivity:	Human, Mouse, Rat, Hamster
Host:	Rabbit
Isotype:	IgG
Clonality:	Monoclonal
Immunogen:	A synthetic peptide of human Moesin
Formulation:	50mM Tris-Glycine(pH 7.4), 0.15M NaCl, 40% Glycerol, 0.01% Sodium azide and 0.05% BSA
Concentration:	lot specific
Purification:	Affinity Purified
Conjugation:	Unconjugated
Storage:	Store at 4°C short term. Aliquot and store at -20°C long term. Avoid freeze/thaw cycles.
Stability:	1 year
Predicted Protein Size:	Calculated MW: 68 kDa; Observed MW: 68 kDa
Gene Name:	moesin
Database Link:	Entrez Gene 4478 Human P26038
Background:	Swiss-Prot Acc.P26038.Probably involved in connections of major cytoskeletal structures to the plasma membrane. May inhibit herpes simplex virus 1 infection at an early stage. Plays a role in regulating the proliferation, migration, and adhesion of human lymphoid cells and participates in immunologic synapse formation (PubMed:27405666).
Synonyms:	moesin


[View online »](#)

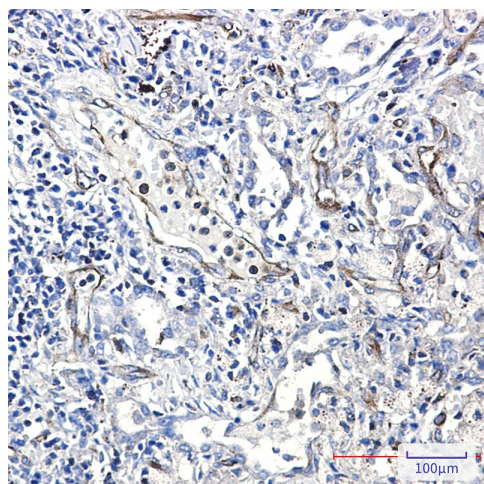
Product images:



Western blot analysis of Moesin in mouse heart lysates using Moesin antibody.



Western blot analysis of Moesin in CHO-K1, C6, Jurkat lysates using Moesin antibody.



Immunohistochemistry analysis of paraffin-embedded Human lung cancer using Moesin antibody. High-pressure and temperature Sodium Citrate pH 6.0 was used for antigen retrieval.

