

Product datasheet for **TA384804**

MSMB Rabbit Polyclonal Antibody

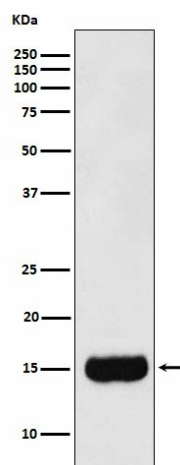
Product data:

Product Type:	Primary Antibodies
Applications:	IHC, IP, WB
Recommended Dilution:	WB: 1/1000-1/5000 IHC: 1/100-1/500 IP: 1/50
Reactivity:	Human
Host:	Rabbit
Isotype:	IgG
Clonality:	Polyclonal
Immunogen:	A synthesized peptide derived from human Prostate Secretory Protein/PSP
Formulation:	Rabbit IgG in phosphate buffered saline , pH 7.4, 150mM NaCl, 0.02% sodium azide and 50% glycerol.
Concentration:	lot specific
Purification:	Affinity Chromatography
Conjugation:	Unconjugated
Storage:	Store at 4°C short term. Aliquot and store at -20°C long term. Avoid freeze/thaw cycles.
Stability:	1 year
Predicted Protein Size:	15kDa
Database Link:	P08118
Background:	Swiss-Prot Acc.P08118. Specific receptors for this protein are found on spermatozoa and in the prostate.



[View online »](#)

Product images:



Western blot analysis of Prostate Secretory Protein/PSP in Human prostate cancer lysates using Prostate Secretory Protein antibody.